



TOURIST ACCOMMODATION AUSTRALIA

EMBARGO: 11.30AM (CANBERRA TIME) THURS 8 JUL 2004

C O N T E N T S

	<i>page</i>
Notes	2
Summary of findings	3
List of tables	7

ADDITIONAL INFORMATION

Explanatory Notes	41
Glossary	44

I N Q U I R I E S

- For further information about these and related statistics, contact the National Information and Referral Service on 1300 135 070.

NOTES

FORTHCOMING ISSUES

<i>ISSUE (Quarter)</i>	<i>RELEASE DATE</i>
June 2004	8 October 2004
September 2004	10 January 2005

.....

INTRODUCTION

This publication presents results from the quarterly Survey of Tourist Accommodation (STA). The scope of the STA includes hotels, motels and guest houses and serviced apartments with 15 or more rooms.

HOTELS, MOTELS AND GUEST HOUSES AND SERVICED APARTMENTS

DATA QUALITY IMPROVEMENTS

In the June quarter 2003 the ABS identified 132 hotels, motels and guest houses and serviced apartments which had been operating for a number of quarters but were not on the STA frame. These additional establishments were included in the STA from the June quarter 2003.

BREAK IN TIME SERIES

The addition of the 132 tourism establishments resulted in a break in time series between the March and June quarters 2003. The impact of the break in time series is explained in Appendix 1, *Tourist Accommodation, Australia* (cat. no. 8635.0), December quarter 2003. Particular care needs to be taken for all calculations of percentage changes that cross the break in series.

DATA REVISIONS

Revisions were made to *Tourist Accommodation, Small Area Data, Australian Capital Territory* (cat. no. 8635.8.55.001), for the September and December quarters 2003. The revised data are available on the ABS web site <www.abs.gov.au>.

CHANGES IN THIS ISSUE

This publication no longer presents comparative tourism region data for the same quarter of the previous year. Tourism regions are reviewed annually and are subject to boundary and name changes. Extensive changes have been made to tourism regions in Western Australia. Where changes have occurred care should be taken when making comparisons with previously published data at this level. For details of changes to tourism regions refer to Tourism Theme Page of the ABS web site <www.abs.gov.au>.

STAR GRADING

Star grade classifications of establishments have been revised by AAA Tourism Pty Ltd. These changes have affected star grade tables in this publication. Further changes are expected to impact June and September quarter 2004 data. These changes should be taken into account when making comparisons with previous quarters.

CAPACITY COUNTS

A Feature Article presenting counts of accommodation establishments and capacity as at March 2004 will be available on the ABS web site <www.abs.gov.au> on 22 July 2004.

Susan Linacre
Acting Australian Statistician

SUMMARY OF FINDINGS

SEASONALLY ADJUSTED AND TREND

SEASONALLY ADJUSTED AND TREND KEY FIGURES(a), Hotels, motels and guest houses and serviced apartments—Australia

	Mar Qtr 2003	Dec Qtr 2003	Mar Qtr 2004
Seasonally Adjusted			
Room occupancy rate (%)	59.1	62.2	61.2
Takings from accommodation ('000)	1 238 786	1 425 056	1 379 638
Trend			
Room occupancy rate (%)	58.8	61.4	62.1
Takings from accommodation ('000)	1 231 913	1 384 265	1 413 790

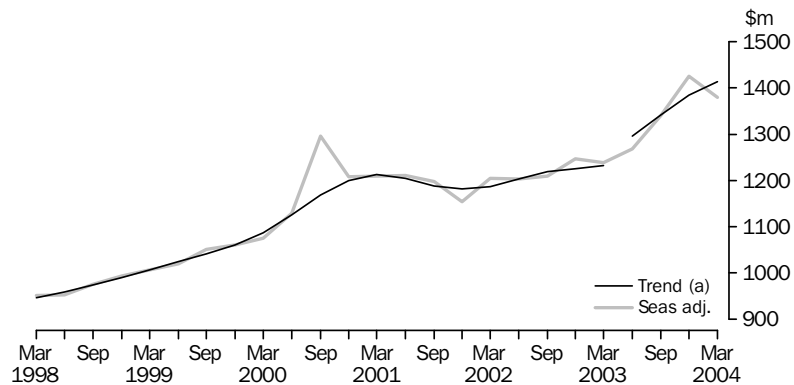
(a) Break in time series between the March and June quarters 2003. See Explanatory Notes.

Accommodation takings

The trend estimate of the total accommodation takings for hotels, motels and guest houses and serviced apartments combined rose 2.1% to \$1,413.8 million in March quarter 2004 compared with December quarter 2003.

The seasonally adjusted estimate of the total accommodation takings fell by 3.2% to \$1,379.6 million from December quarter 2003 to March quarter 2004.

ACCOMMODATION TAKINGS(a), Seasonally adjusted and Trend—Australia



(a) Break in time series between the March and June quarters 2003. See Explanatory Notes.

Room occupancy rate

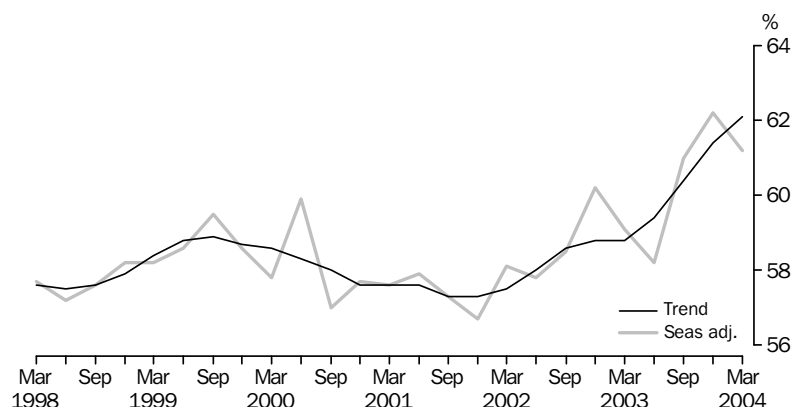
The trend estimate of the room occupancy rate for hotels, motels and guest houses and serviced apartments combined reached a record level in March quarter 2004. It rose 0.7 percentage points from 61.4% in December quarter 2003 to 62.1% in March quarter 2004. The trend has been increasing since March quarter 2003.

The seasonally adjusted estimate of the room occupancy rate fell by 1.0 percentage point in March quarter 2004 compared with December quarter 2003, to 61.2%.

SUMMARY OF FINDINGS *continued*

Room occupancy rate
continued

ROOM OCCUPANCY RATE(a), Seasonally adjusted and
Trend—Australia



(a) Room occupancy rates are not subject to a break in series.

ORIGINAL

ORIGINAL KEY FIGURES(a), Australia

	Mar Qtr 2003	Dec Qtr 2003	Mar Qtr 2004
Hotels			
Guest rooms (no.)	77 477	78 720	78 474
Room nights occupied ('000)	4 458.1	4 996.5	4 798.4
Room occupancy rate (%)	64.0	69.4	67.3
Takings from accommodation (\$'000)	621 399	759 603	691 864
Takings per room night occupied (\$)	139.4	152.0	144.2
Motels and guest Houses			
Guest rooms (no.)	83 931	85 390	84 903
Room nights occupied ('000)	3 922.5	4 380.2	4 137.2
Room occupancy rate (%)	52.0	55.9	53.7
Takings from accommodation (\$'000)	355 991	407 394	386 199
Takings per room night occupied (\$)	90.8	93.0	93.3
Serviced apartments			
Guest rooms (no.)	36 070	40 351	40 734
Room nights occupied ('000)	2 120.3	2 524.7	2 480.9
Room occupancy rate (%)	65.4	68.1	67.0
Takings from accommodation (\$'000)	267 305	332 348	320 510
Takings per room night occupied (\$)	126.1	131.6	129.2
Total			
Guest rooms (no.)	197 478	204 461	204 111
Room nights occupied ('000)	10 500.8	11 901.3	11 416.5
Room occupancy rate (%)	59.1	63.5	61.6
Takings from accommodation (\$'000)	1 244 695	1 499 344	1 398 573
Takings per room night occupied (\$)	118.5	126.0	122.5

(a) Break in time series between the March and June quarters 2003. See Explanatory Notes.

Accommodation takings

In March quarter 2004, accommodation takings for hotels, motels and guest houses and serviced apartments combined were \$1,398.6 million. This was a decrease of 6.7% (\$100.8 million) from December quarter 2003. The average takings per room night occupied for hotels, motels and guest houses and serviced apartments combined was \$122.50.

Hotels were the highest contributor to accommodation takings with \$691.9 million (49.5%). Takings per room night occupied in March quarter 2004 were highest for hotels at \$144.20.

SUMMARY OF FINDINGS *continued*

Accommodation takings *continued*

ACCOMMODATION TAKINGS(a), Original—Australia



(a) Break in time series between the March and June quarters 2003. See Explanatory Notes.

The contributions of accommodation takings in March quarter 2004 for hotels, motels and guest houses and serviced apartments combined were highest in New South Wales (34.5%) and Queensland (25.9%) and lowest in the Northern Territory (1.9%).

Room nights occupied

Total room nights occupied were 11.4 million in March quarter 2004 for hotels, motels and guest houses and serviced apartments combined. Room nights occupied decreased by 4.1% (0.5 million) from December quarter 2003 to March quarter 2004.

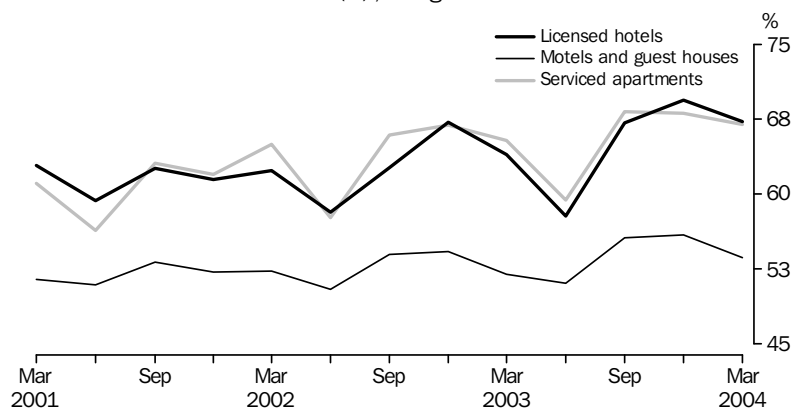
Hotels represented 4.8 million (42.0%) of the total room nights occupied, while motels and guest houses represented 4.1 million (36.2%) and serviced apartments represented 2.5 million (21.7%).

Room occupancy rate

The room occupancy rate for hotels, motels and guest houses and serviced apartments combined decreased 1.9 percentage points to 61.6% in March quarter 2004 compared with December quarter 2003.

Tasmania recorded the highest room occupancy rate for hotels, motels and guest houses and serviced apartments combined with 74.5%. This was followed by the Australian Capital Territory (65.7%) and New South Wales (63.5%).

ROOM OCCUPANCY RATES(a), Original—Australia



(a) Room occupancy rates are not subject to a break in series.

LIST OF TABLES

page

HOTELS, MOTELS AND GUEST HOUSES AND SERVICED APARTMENTS

ORIGINAL, SEASONALLY ADJUSTED AND TREND

1 Australia	9
--------------------	---

SUMMARY

2 Australia	10
--------------------	----

STAR GRADING

3 Australia	12
4 New South Wales	14
5 Victoria	16
6 Queensland	18
7 South Australia	20
8 Western Australia	22
9 Tasmania	24
10 Northern Territory	26
11 Australian Capital Territory	28

TOURISM REGIONS

12 New South Wales	30
13 Victoria	32
14 Queensland	34
15 South Australia	36
16 Western Australia	38
17 Tasmania	39
18 Northern Territory and Australian Capital Territory	40

Period	ORIGINAL		SEASONALLY ADJUSTED		TREND	
	Room occupancy rate	Takings from accommodation(a)	Room occupancy rate	Takings from accommodation(a)	Room occupancy rate	Takings from accommodation(a)
	%	'000	%	'000	%	'000
2000						
September Quarter	58.4	1 330 113	57.0	1 296 255	58.0	1 169 389
December Quarter	58.8	1 267 090	57.7	1 208 032	57.6	1 200 394
2001						
March Quarter	57.7	1 218 107	57.6	1 210 276	57.6	1 213 447
June Quarter	55.2	1 111 337	57.9	1 211 093	57.6	1 204 638
September Quarter	58.7	1 226 522	57.3	1 197 775	57.3	1 187 651
December Quarter	57.6	1 209 554	56.7	1 153 286	57.3	1 180 879
2002						
March Quarter	58.6	1 213 991	58.1	1 204 658	57.5	1 186 868
June Quarter	54.8	1 100 074	57.8	1 202 955	58.0	1 202 615
September Quarter	59.6	1 236 869	58.5	1 209 249	58.6	1 219 116
December Quarter	61.7	1 314 053	60.2	1 247 552	58.8	1 225 434
2003						
March Quarter	59.1	1 244 695	59.1	1 238 786	58.8	1 231 913
June Quarter	55.3	1 159 500	58.2	1 268 894	59.4	1 296 141
September Quarter	62.5	1 373 488	61.0	1 339 736	60.4	1 341 273
December Quarter	63.5	1 499 344	62.2	1 425 056	61.4	1 384 265
2004						
March Quarter	61.6	1 398 573	61.2	1 379 638	62.1	1 413 790

(a) Break in time series between the March and June quarters 2003. See Explanatory Notes.

SUMMARY OF HOTELS, MOTELS AND SERVICED APARTMENTS, Australia

<i>Period</i>	<i>Establishments(a)</i>	<i>Guest rooms(a)</i>	<i>Bed spaces(a)</i>	<i>Persons employed(a)</i>	<i>Room nights occupied(a)</i>	<i>Room occupancy rate</i>
	no.	no.	no.	no.	'000	%
.....						
LICENSED HOTELS WITH FACILITIES						
2002						
December Quarter	777	77 516	203 238	69 699	4 770	67.2
2003						
March Quarter	781	77 477	203 876	68 458	4 458	64.0
June Quarter	799	78 089	204 484	69 155	4 109	57.8
September Quarter	794	77 914	203 346	70 105	4 810	67.1
December Quarter	796	78 720	202 962	70 046	4 996	69.4
2004						
March Quarter	791	78 474	202 354	69 472	4 798	67.3
Year ended March 2003	17 836	63.0
Year ended March 2004	18 714	65.4
.....						
MOTELS AND GUEST HOUSES WITH FACILITIES						
2002						
December Quarter	2 382	83 565	244 156	29 471	4 173	54.3
2003						
March Quarter	2 383	83 931	244 433	29 209	3 922	52.0
June Quarter	2 424	85 148	247 803	29 627	3 955	51.1
September Quarter	2 416	85 198	247 709	30 074	4 356	55.6
December Quarter	2 415	85 390	246 107	29 473	4 380	55.9
2004						
March Quarter	2 404	84 903	244 265	29 432	4 137	53.7
Year ended March 2003	16 091	52.7
Year ended March 2004	16 829	54.1
.....						
SERVICED APARTMENTS						
2002						
December Quarter	675	35 350	116 385	12 430	2 175	66.9
2003						
March Quarter	690	36 070	117 683	12 327	2 120	65.4
June Quarter	772	39 182	128 060	12 966	2 120	59.4
September Quarter	775	39 921	129 429	13 268	2 492	68.3
December Quarter	781	40 351	131 183	13 489	2 525	68.1
2004						
March Quarter	786	40 734	132 240	13 371	2 481	67.0
Year ended March 2003	8 294	64.0
Year ended March 2004	9 617	65.8
.....						
HOTELS, MOTELS AND SERVICED APARTMENTS						
2002						
December Quarter	3 834	196 431	563 779	111 600	11 118	61.7
2003						
March Quarter	3 854	197 478	565 992	109 994	10 501	59.1
June Quarter	3 995	202 419	580 347	111 748	10 184	55.3
September Quarter	3 985	203 033	580 484	113 447	11 658	62.5
December Quarter	3 992	204 461	580 252	113 008	11 901	63.5
2004						
March Quarter	3 981	204 111	578 859	112 275	11 417	61.6
Year ended March 2003	42 221	58.8
Year ended March 2004	45 160	60.7

.. not applicable

(a) Break in time series between the March and June quarters 2003. See Explanatory Notes.

Period	Guest	Bed	Guest	Average	Takings from
	nights(a)	occupancy rate	arrivals(a)	length of stay	accommodation(a)
	'000	%	'000	days	\$'000
.....					
LICENSED HOTELS WITH FACILITIES					
2002					
December Quarter	7 987	42.9	3 417	2.3	668 532
2003					
March Quarter	7 381	40.3	3 143	2.3	621 399
June Quarter	6 607	35.5	2 876	2.3	553 849
September Quarter	7 940	42.4	3 340	2.4	664 512
December Quarter	8 298	44.7	3 590	2.3	759 603
2004					
March Quarter	7 940	43.2	3 343	2.4	691 864
Year ended March 2003	29 464	39.7	12 734	2.3	2 456 579
Year ended March 2004	30 784	41.5	13 149	2.3	2 669 829
.....					
MOTELS AND GUEST HOUSES WITH FACILITIES					
2002					
December Quarter	7 402	33.0	4 169	1.8	376 270
2003					
March Quarter	6 984	31.8	3 849	1.8	355 991
June Quarter	6 813	30.2	3 831	1.8	351 004
September Quarter	7 706	33.8	4 333	1.8	399 637
December Quarter	7 815	34.6	4 359	1.8	407 394
2004					
March Quarter	7 379	33.3	4 067	1.8	386 199
Year ended March 2003	28 291	31.7	15 920	1.8	1 435 128
Year ended March 2004	29 713	33.0	16 590	1.8	1 544 235
.....					
SERVICED APARTMENTS					
2002					
December Quarter	4 804	44.9	1 309	3.7	269 252
2003					
March Quarter	4 701	44.4	1 268	3.7	267 305
June Quarter	4 571	39.2	1 293	3.5	254 647
September Quarter	5 447	46.0	1 495	3.6	309 339
December Quarter	5 701	47.3	1 589	3.6	332 348
2004					
March Quarter	5 602	46.7	1 513	3.7	320 510
Year ended March 2003	18 032	42.3	4 954	3.6	1 003 986
Year ended March 2004	21 321	44.8	5 890	3.6	1 216 843
.....					
HOTELS, MOTELS AND SERVICED APARTMENTS					
2002					
December Quarter	20 193	39.0	8 894	2.3	1 314 053
2003					
March Quarter	19 066	37.5	8 260	2.3	1 244 695
June Quarter	17 991	34.1	8 000	2.2	1 159 500
September Quarter	21 093	39.6	9 167	2.3	1 373 488
December Quarter	21 814	41.0	9 539	2.3	1 499 344
2004					
March Quarter	20 921	39.8	8 923	2.3	1 398 573
Year ended March 2003	75 787	36.8	33 608	2.3	4 895 693
Year ended March 2004	81 818	38.6	35 629	2.3	5 430 906

(a) Break in time series between the March and June quarters 2003. See Explanatory Notes.

HOTELS, MOTELS AND SERVICED APARTMENTS, Star grading(a)—Australia

Period	Licensed hotels with facilities	Motels and guest houses	Serviced apartments	STAR GRADING						Ungraded	Total
				1	2	3	4	5			
ESTABLISHMENTS, CAPACITY AND EMPLOYMENT (b) (no.)											
March Quarter 2003											
Establishments	781	2 383	690	67	373	1 859	1 208	116	231	3 854	
Guest rooms	77 477	83 931	36 070	2 660	11 224	67 937	84 887	23 816	6 954	197 478	
Bed spaces	203 876	244 433	117 683	8 432	32 821	200 197	245 685	59 528	19 329	565 992	
Persons employed	68 458	29 209	12 327	631	4 819	23 400	43 380	34 436	3 328	109 994	
March Quarter 2004											
Establishments	791	2 404	786	47	321	1 909	1 373	111	220	3 981	
Guest rooms	78 474	84 903	40 734	1 412	10 429	70 166	91 952	23 228	6 924	204 111	
Bed spaces	202 354	244 265	132 240	4 884	29 383	203 966	264 981	57 115	18 530	578 859	
Persons employed	69 472	29 432	13 371	451	4 202	24 741	46 109	33 763	3 009	112 275	
ROOM NIGHTS OCCUPIED (b) ('000)											
2003											
March Quarter	4 458.1	3 922.5	2 120.3	109.1	404.6	3 284.7	4 943.4	1 513.8	245.1	10 500.8	
2004											
January	1 556.9	1 369.5	887.2	14.2	141.7	1 189.7	1 889.4	491.6	87.0	3 813.6	
February	1 563.3	1 282.6	768.1	11.8	123.6	1 075.3	1 808.5	512.5	82.4	3 614.1	
March	1 678.2	1 485.0	825.6	13.9	140.9	1 239.6	1 970.7	529.9	93.9	3 988.8	
March Quarter	4 798.4	4 137.2	2 480.9	39.9	406.1	3 504.6	5 668.7	1 534.0	263.2	11 416.5	
ROOM OCCUPANCY RATE (%)											
2003											
March Quarter	64.0	52.0	65.4	45.8	40.1	53.8	64.7	70.6	39.3	59.1	
2004											
January	64.1	52.2	70.3	32.4	44.1	54.8	66.3	68.4	41.0	60.4	
February	68.8	52.2	65.2	29.2	41.1	53.0	67.9	76.2	41.4	61.2	
March	69.1	56.6	65.5	32.5	43.9	57.1	69.2	73.7	44.1	63.2	
March Quarter	67.3	53.7	67.0	31.4	43.1	55.0	67.8	72.7	42.2	61.6	
GUEST NIGHTS (b) ('000)											
2003											
March Quarter	7 381.0	6 983.8	4 701.5	192.6	718.8	6 150.5	9 097.0	2 497.5	409.9	19 066.3	
2004											
January	2 867.2	2 717.8	2 257.5	26.3	272.2	2 468.5	4 022.1	895.0	158.4	7 842.4	
February	2 452.8	2 150.7	1 617.9	19.4	211.1	1 902.6	3 161.8	792.3	134.1	6 221.4	
March	2 620.1	2 510.3	1 726.8	23.4	241.2	2 194.4	3 430.1	812.1	155.8	6 857.1	
March Quarter	7 940.1	7 378.7	5 602.1	69.1	724.5	6 565.5	10 614.0	2 499.4	448.3	20 920.9	
BED OCCUPANCY RATE (%)											
2003											
March Quarter	40.3	31.8	44.4	25.5	24.3	34.2	41.1	46.6	23.6	37.5	
2004											
January	45.8	36.0	55.2	17.3	30.2	39.1	49.0	50.6	27.9	43.8	
February	41.9	30.4	42.3	13.8	25.1	32.2	41.2	47.9	25.2	37.1	
March	41.8	33.2	42.3	15.8	26.8	34.8	41.8	45.9	27.4	38.3	
March Quarter	43.2	33.3	46.7	15.7	27.4	35.5	44.0	48.2	26.9	39.8	

(a) Star grade classifications have been revised. See Explanatory Notes.

(b) Break in time series between the March and June quarters 2003. See Explanatory Notes.

HOTELS, MOTELS AND SERVICED APARTMENTS, Star grading(a)—Australia *continued*

Period	Licensed hotels with facilities	Motels and guest houses	Serviced apartments	STAR GRADING						Total
				1	2	3	4	5	Ungraded	
GUEST ARRIVALS (b) ('000)										
2003										
March Quarter	3 143.0	3 848.5	1 268.1	132.0	386.4	2 996.2	3 601.2	975.4	168.4	8 259.6
2004										
January	1 110.6	1 472.3	554.3	16.6	153.9	1 159.3	1 432.7	307.5	67.1	3 137.2
February	1 079.5	1 201.6	462.7	13.0	120.7	940.7	1 290.4	320.0	59.1	2 743.8
March	1 152.8	1 393.3	496.1	14.8	137.7	1 084.6	1 406.7	329.9	68.4	3 042.1
March Quarter	3 342.9	4 067.2	1 513.0	44.4	412.2	3 184.6	4 129.8	957.4	194.6	8 923.1
AVERAGE LENGTH OF STAY (days)										
2003										
March Quarter	2.3	1.8	3.7	1.5	1.9	2.1	2.5	2.6	2.4	2.3
2004										
January	2.6	1.8	4.1	1.6	1.8	2.1	2.8	2.9	2.4	2.5
February	2.3	1.8	3.5	1.5	1.7	2.0	2.5	2.5	2.3	2.3
March	2.3	1.8	3.5	1.6	1.8	2.0	2.4	2.5	2.3	2.3
March Quarter	2.4	1.8	3.7	1.6	1.8	2.1	2.6	2.6	2.3	2.3
TAKINGS FROM ACCOMMODATION (b) (\$'000)										
2003										
March Quarter	621 399	355 991	267 305	6 401	27 208	283 475	610 905	294 511	22 196	1 244 695
2004										
January	224 589	131 555	123 103	900	9 758	112 545	247 769	99 642	8 633	479 247
February	222 736	118 245	94 940	679	7 967	94 203	225 299	99 972	7 801	435 921
March	244 539	136 399	102 467	787	9 196	108 592	248 639	106 938	9 253	483 406
March Quarter	691 864	386 199	320 510	2 366	26 921	315 340	721 707	306 552	25 687	1 398 573
AVERAGE TAKINGS PER ROOM NIGHT OCCUPIED (\$)										
2003										
March Quarter	139.4	90.8	126.1	58.7	67.2	86.3	123.6	194.5	90.6	118.5
2004										
January	144.3	96.1	138.7	63.4	68.9	94.6	131.1	202.7	99.2	125.7
February	142.5	92.2	123.6	57.4	64.5	87.6	124.6	195.1	94.7	120.6
March	145.7	91.8	124.1	56.8	65.3	87.6	126.2	201.8	98.6	121.2
March Quarter	144.2	93.3	129.2	59.3	66.3	90.0	127.3	199.8	97.6	122.5
AVERAGE TAKINGS PER AVAILABLE ROOM NIGHT (\$)										
2003										
March Quarter	89.2	47.1	82.4	26.9	26.9	46.4	80.0	137.4	35.6	70.1
2004										
January	92.5	50.1	97.6	20.6	30.4	51.9	86.9	138.6	40.7	75.9
February	98.0	48.1	80.5	16.7	26.5	46.4	84.5	148.6	39.2	73.8
March	100.7	52.0	81.3	18.4	28.7	50.1	87.2	148.7	43.4	76.6
March Quarter	97.0	50.1	86.6	18.6	28.6	49.5	86.3	145.2	41.1	75.4

(a) Star grade classifications have been revised. See Explanatory Notes.

(b) Break in time series between the March and June quarters 2003. See Explanatory Notes.

HOTELS, MOTELS AND SERVICED APARTMENTS, Star grading(a)—NSW

Period	Licensed hotels with facilities	Motels and guest houses	Serviced apartments	STAR GRADING						Ungraded	Total
				1	2	3	4	5			
ESTABLISHMENTS, CAPACITY AND EMPLOYMENT (b) (no.)											
March Quarter 2003											
Establishments	199	975	129	35	133	726	311	25	73	1 303	
Guest rooms	23 319	32 110	7 295	1 634	4 000	24 204	24 012	6 974	1 900	62 724	
Bed spaces	57 618	94 655	23 016	5 582	11 649	71 188	65 333	15 979	5 558	175 289	
Persons employed	18 851	10 977	2 740	226	1 589	7 497	13 010	9 480	766	32 568	
March Quarter 2004											
Establishments	199	988	158	24	107	761	357	25	71	1 345	
Guest rooms	23 001	32 571	8 460	914	3 442	25 396	25 343	6 690	2 247	64 032	
Bed spaces	55 632	94 001	27 087	3 482	10 017	72 562	69 292	15 142	6 225	176 720	
Persons employed	18 597	10 953	2 906	173	1 152	8 015	13 121	9 153	842	32 456	
ROOM NIGHTS OCCUPIED (b) ('000)											
2003											
March Quarter	1 449.3	1 512.2	458.8	66.4	161.8	1 167.3	1 492.4	477.5	54.9	3 420.2	
2004											
January	488.8	538.4	192.0	9.3	55.4	429.4	565.1	136.7	23.4	1 219.3	
February	521.1	486.2	173.3	7.4	46.5	388.6	554.6	160.5	23.1	1 180.6	
March	540.8	563.5	182.4	8.5	51.5	449.6	588.7	162.2	26.2	1 286.7	
March Quarter	1 550.8	1 588.1	547.7	25.1	153.4	1 267.6	1 708.4	459.5	72.7	3 686.6	
ROOM OCCUPANCY RATE (%)											
2003											
March Quarter	69.1	52.3	70.1	45.1	44.9	53.6	69.1	76.1	32.4	60.6	
2004											
January	68.8	53.4	73.5	32.7	52.4	54.6	72.0	66.2	34.2	61.6	
February	78.4	51.6	70.9	28.3	47.5	52.9	75.5	83.1	36.0	63.8	
March	76.2	56.0	69.8	31.0	49.2	57.2	74.9	78.6	38.4	65.1	
March Quarter	74.4	53.7	71.4	30.7	49.7	55.0	74.1	75.8	36.2	63.5	
GUEST NIGHTS (b) ('000)											
2003											
March Quarter	2 348.7	2 736.7	951.9	122.3	301.5	2 147.4	2 597.9	774.2	93.9	6 037.2	
2004											
January	853.8	1 089.5	468.2	18.3	112.6	873.4	1 122.0	237.0	48.1	2 411.5	
February	798.8	825.0	352.4	13.0	84.1	671.3	921.2	245.4	41.3	1 976.2	
March	828.6	965.0	363.9	15.1	92.9	779.4	972.5	247.5	50.1	2 157.5	
March Quarter	2 481.2	2 879.5	1 184.5	46.5	289.6	2 324.1	3 015.6	730.0	139.5	6 545.2	
BED OCCUPANCY RATE (%)											
2003											
March Quarter	45.3	32.1	46.1	24.3	28.8	33.6	44.2	53.8	18.9	38.3	
2004											
January	49.7	37.4	56.2	17.0	37.1	38.9	52.3	50.8	25.4	44.2	
February	49.7	30.4	45.2	13.0	29.9	32.0	45.8	56.2	23.2	38.7	
March	48.3	33.2	43.7	14.5	30.9	34.7	45.3	53.0	26.5	39.6	
March Quarter	49.2	33.8	48.5	14.9	32.7	35.3	47.8	53.3	25.1	40.9	

(a) Star grade classifications have been revised. See Explanatory Notes.

(b) Break in time series between the March and June quarters 2003. See Explanatory Notes.

Period	Licensed hotels with facilities	Motels and guest houses	Serviced apartments	STAR GRADING						Ungraded	Total
				1	2	3	4	5			
GUEST ARRIVALS (b) ('000)											
2003											
March Quarter	982.6	1 610.7	287.2	88.7	155.9	1 175.6	1 108.2	311.0	41.1	2 880.5	
2004											
January	321.1	652.9	134.6	12.3	65.9	485.4	437.0	87.3	20.7	1 108.5	
February	325.8	502.4	112.7	9.4	49.1	375.9	391.6	97.5	17.3	940.9	
March	342.1	583.7	119.8	10.2	53.8	438.6	420.1	100.1	22.8	1 045.5	
March Quarter	988.9	1 738.9	367.0	31.8	168.7	1 299.9	1 248.8	284.8	60.8	3 094.8	
AVERAGE LENGTH OF STAY (days)											
2003											
March Quarter	2.4	1.7	3.3	1.4	1.9	1.8	2.3	2.5	2.3	2.1	
2004											
January	2.7	1.7	3.5	1.5	1.7	1.8	2.6	2.7	2.3	2.2	
February	2.5	1.6	3.1	1.4	1.7	1.8	2.4	2.5	2.4	2.1	
March	2.4	1.7	3.0	1.5	1.7	1.8	2.3	2.5	2.2	2.1	
March Quarter	2.5	1.7	3.2	1.5	1.7	1.8	2.4	2.6	2.3	2.1	
TAKINGS FROM ACCOMMODATION (b) (\$'000)											
2003											
March Quarter	219 492	141 143	67 643	3 954	11 915	104 614	198 691	103 916	5 187	428 278	
2004											
January	76 708	53 629	30 931	586	4 017	41 308	80 863	31 607	2 888	161 269	
February	84 363	45 651	24 890	422	3 139	35 074	76 712	37 033	2 523	154 904	
March	87 100	52 440	26 418	459	3 493	40 416	81 233	37 408	2 949	165 958	
March Quarter	248 170	151 721	82 240	1 467	10 649	116 798	238 808	106 048	8 360	482 131	
AVERAGE TAKINGS PER ROOM NIGHT OCCUPIED (\$)											
2003											
March Quarter	151.5	93.3	147.4	59.6	73.7	89.6	133.1	217.6	94.5	125.2	
2004											
January	156.9	99.6	161.1	63.2	72.5	96.2	143.1	231.2	123.7	132.3	
February	161.9	93.9	143.6	57.2	67.5	90.3	138.3	230.8	109.4	131.2	
March	161.1	93.1	144.8	54.2	67.9	89.9	138.0	230.6	112.4	129.0	
March Quarter	160.0	95.5	150.2	58.4	69.4	92.1	139.8	230.8	115.1	130.8	
AVERAGE TAKINGS PER AVAILABLE ROOM NIGHT (\$)											
2003											
March Quarter	104.7	48.9	103.4	26.9	33.1	48.1	92.0	165.6	30.6	75.9	
2004											
January	108.0	53.2	118.3	20.7	38.0	52.5	103.1	153.1	42.3	81.5	
February	126.9	48.5	101.8	16.2	32.1	47.7	104.4	191.7	39.4	83.7	
March	122.7	52.1	101.1	16.8	33.4	51.5	103.4	181.2	43.1	83.9	
March Quarter	119.0	51.3	107.2	17.9	34.5	50.6	103.6	175.0	41.6	83.0	

(a) Star grade classifications have been revised. See Explanatory Notes.

(b) Break in time series between the March and June quarters 2003. See Explanatory Notes.

HOTELS, MOTELS AND SERVICED APARTMENTS, Star grading(a)—Vic.

Period	Licensed hotels with facilities	Motels and guest houses	Serviced apartments	STAR GRADING						Ungraded	Total
				1	2	3	4	5			
ESTABLISHMENTS, CAPACITY AND EMPLOYMENT (b) (no.)											
March Quarter 2003											
Establishments	132	500	89	5	52	354	267	22	21	721	
Guest rooms	12 577	15 580	5 244	262	1 263	11 431	15 042	4 623	780	33 401	
Bed spaces	29 926	44 920	15 294	793	4 149	31 964	40 989	10 108	2 137	90 140	
Persons employed	14 019	5 366	1 751	87	547	3 761	6 959	9 174	608	21 136	
March Quarter 2004											
Establishments	136	501	107	2	45	346	308	22	21	744	
Guest rooms	13 629	15 988	5 700	np	1 388	11 581	17 055	4 525	np	35 317	
Bed spaces	30 908	46 434	17 820	np	4 184	32 991	46 316	9 482	np	95 162	
Persons employed	14 565	5 377	1 658	np	600	3 477	7 861	9 117	np	21 600	
ROOM NIGHTS OCCUPIED (b) ('000)											
2003											
March Quarter	776.8	715.3	332.9	13.6	32.9	538.5	891.6	319.0	29.4	1 825.0	
2004											
January	265.4	244.9	117.8	np	19.4	183.1	316.4	100.5	np	628.0	
February	280.5	233.2	112.0	np	np	167.2	324.7	107.9	9.4	625.7	
March	312.2	281.4	126.3	np	np	203.6	371.1	114.8	np	719.9	
March Quarter	858.1	759.5	356.0	np	54.8	553.9	1 012.2	323.2	np	1 973.7	
ROOM OCCUPANCY RATE (%)											
2003											
March Quarter	68.6	51.0	70.5	57.8	28.9	52.3	65.9	76.7	41.9	60.7	
2004											
January	62.8	49.7	67.0	np	45.1	51.5	59.8	71.7	np	57.6	
February	71.0	50.4	68.4	np	np	50.1	65.7	82.2	44.9	61.2	
March	74.0	56.9	72.2	np	np	57.0	70.3	81.8	np	66.0	
March Quarter	69.2	52.4	69.2	np	43.6	52.9	65.3	78.5	np	61.6	
GUEST NIGHTS (b) ('000)											
2003											
March Quarter	1 199.0	1 268.2	649.8	23.6	63.6	972.1	1 547.8	460.2	49.7	3 117.1	
2004											
January	446.9	481.0	267.4	np	36.8	358.7	624.7	159.0	np	1 195.3	
February	415.1	386.9	210.5	np	np	287.4	526.4	154.4	15.0	1 012.4	
March	463.1	478.2	237.6	np	np	354.9	609.3	161.4	np	1 178.9	
March Quarter	1 325.1	1 346.1	715.4	np	100.0	1 001.1	1 760.5	474.7	np	3 386.5	
BED OCCUPANCY RATE (%)											
2003											
March Quarter	44.5	31.4	47.2	33.1	17.0	33.8	42.0	50.6	25.8	38.4	
2004											
January	46.6	33.6	48.6	np	28.4	35.4	43.5	54.1	np	40.7	
February	46.3	28.8	41.4	np	np	30.2	39.4	56.1	25.4	36.8	
March	48.4	33.3	43.7	np	np	34.9	42.6	54.9	np	40.1	
March Quarter	47.1	32.0	44.6	np	26.4	33.6	41.9	55.0	np	39.3	

np not available for publication but included in totals where applicable, unless otherwise indicated

(b) Break in time series between the March and June quarters 2003. See Explanatory Notes.

(a) Star grade classifications have been revised. See Explanatory Notes.

Period	Licensed hotels with facilities	Motels and guest houses	Serviced apartments	STAR GRADING						Ungraded	Total
				1	2	3	4	5			
GUEST ARRIVALS (b) ('000)											
2003											
March Quarter	563.2	733.5	187.2	19.2	37.5	500.9	706.3	200.3	19.6	1 483.8	
2004											
January	176.8	261.3	67.0	np	21.5	172.3	253.2	51.5	np	505.2	
February	186.5	221.7	62.9	np	np	145.9	240.4	60.3	6.5	471.1	
March	206.3	266.5	69.1	np	np	178.6	271.3	62.4	np	541.9	
March Quarter	569.5	749.6	199.0	np	60.6	496.8	764.8	174.3	np	1 518.1	
AVERAGE LENGTH OF STAY (days)											
2003											
March Quarter	2.1	1.7	3.5	1.2	1.7	1.9	2.2	2.3	2.5	2.1	
2004											
January	2.5	1.8	4.0	np	1.7	2.1	2.5	3.1	np	2.4	
February	2.2	1.7	3.3	np	np	2.0	2.2	2.6	2.3	2.1	
March	2.2	1.8	3.4	np	np	2.0	2.2	2.6	np	2.2	
March Quarter	2.3	1.8	3.6	np	1.7	2.0	2.3	2.7	np	2.2	
TAKINGS FROM ACCOMMODATION (b) (\$'000)											
2003											
March Quarter	120 720	68 894	48 019	784	2 020	47 504	116 372	66 697	4 257	237 633	
2004											
January	39 255	24 468	17 654	np	1 290	16 866	41 794	20 223	np	81 377	
February	41 724	22 421	15 642	np	np	14 564	41 883	21 041	1 270	79 788	
March	52 871	27 347	18 931	np	np	18 353	52 712	25 417	np	99 150	
March Quarter	133 850	74 237	52 228	np	3 532	49 783	136 389	66 681	np	260 315	
AVERAGE TAKINGS PER ROOM NIGHT OCCUPIED (\$)											
2003											
March Quarter	155.4	96.3	144.2	57.5	61.4	88.2	130.5	209.1	144.8	130.2	
2004											
January	147.9	99.9	149.9	np	66.5	92.1	132.1	201.1	np	129.6	
February	148.7	96.1	139.7	np	np	87.1	129.0	195.1	134.9	127.5	
March	169.3	97.2	149.9	np	np	90.1	142.0	221.4	np	137.7	
March Quarter	156.0	97.7	146.7	np	64.4	89.9	134.7	206.3	np	131.9	
AVERAGE TAKINGS PER AVAILABLE ROOM NIGHT (\$)											
2003											
March Quarter	106.6	49.2	101.7	33.2	17.8	46.2	86.0	160.3	60.6	79.1	
2004											
January	92.9	49.7	100.4	np	30.0	47.4	79.1	144.2	np	74.6	
February	105.6	48.5	95.5	np	np	43.6	84.8	160.3	60.6	78.1	
March	125.3	55.3	108.2	np	np	51.4	99.8	181.2	np	90.8	
March Quarter	108.0	51.2	101.5	np	28.1	47.6	88.0	161.9	np	81.2	

np not available for publication but included in totals where applicable, unless otherwise indicated

(b) Break in time series between the March and June quarters 2003. See Explanatory Notes.

(a) Star grade classifications have been revised. See Explanatory Notes.

HOTELS, MOTELS AND SERVICED APARTMENTS, Star grading(a)—Qld

Period	Licensed hotels with facilities	Motels and guest houses	Serviced apartments	STAR GRADING						Ungraded	Total
				1	2	3	4	5			
ESTABLISHMENTS, CAPACITY AND EMPLOYMENT (b) (no.)											
March Quarter 2003											
Establishments	167	507	295	13	84	411	374	42	45	969	
Guest rooms	20 607	18 273	13 908	362	2 153	15 092	26 657	7 188	1 336	52 788	
Bed spaces	62 503	53 281	46 798	993	6 382	46 660	83 293	21 257	3 997	162 582	
Persons employed	20 158	6 388	4 440	103	1 035	5 297	12 668	11 201	682	30 986	
March Quarter 2004											
Establishments	171	513	330	10	74	423	427	37	43	1 014	
Guest rooms	20 515	18 382	16 104	191	2 017	15 937	29 089	6 474	1 293	55 001	
Bed spaces	61 659	53 471	53 103	483	5 928	49 630	90 084	18 607	3 501	168 233	
Persons employed	19 904	6 581	4 926	67	907	6 220	13 243	10 501	473	31 411	
ROOM NIGHTS OCCUPIED (b) ('000)											
2003											
March Quarter	1 121.0	872.4	789.7	15.3	77.7	772.2	1 457.3	404.0	56.6	2 783.1	
2004											
January	435.7	316.1	367.1	2.1	31.2	306.4	619.2	139.5	20.5	1 118.9	
February	363.7	297.4	291.1	1.8	26.4	258.9	526.6	121.5	17.0	952.2	
March	386.5	330.3	306.5	2.1	28.2	281.7	568.2	124.2	19.0	1 023.3	
March Quarter	1 185.9	943.8	964.7	6.0	85.7	847.0	1 714.0	385.2	56.5	3 094.4	
ROOM OCCUPANCY RATE (%)											
2003											
March Quarter	60.4	53.1	63.1	47.1	40.1	56.9	60.7	62.4	47.0	58.6	
2004											
January	68.6	55.5	73.5	35.0	49.8	62.1	68.7	69.5	51.2	65.7	
February	61.2	55.8	62.3	31.9	45.2	56.1	62.4	64.7	45.3	59.7	
March	60.8	58.0	61.4	35.7	45.0	57.0	63.0	61.9	47.5	60.0	
March Quarter	63.6	56.4	65.8	34.3	46.7	58.5	64.7	65.4	48.1	61.8	
GUEST NIGHTS (b) ('000)											
2003											
March Quarter	2 109.0	1 545.8	1 955.9	26.2	131.7	1 573.3	3 030.8	747.8	100.7	5 610.7	
2004											
January	934.0	624.0	1 025.4	3.4	59.5	694.5	1 494.4	295.0	36.7	2 583.4	
February	643.9	495.8	675.8	2.4	44.8	498.1	1 038.2	205.7	26.3	1 815.5	
March	677.7	548.6	713.2	2.8	47.5	535.0	1 117.4	207.4	29.5	1 939.5	
March Quarter	2 255.7	1 668.3	2 414.4	8.6	151.8	1 727.7	3 649.9	708.0	92.5	6 338.4	
BED OCCUPANCY RATE (%)											
2003											
March Quarter	37.5	32.3	46.4	29.3	22.9	37.5	40.4	39.1	28.0	38.4	
2004											
January	48.9	37.6	62.3	22.9	32.4	45.2	53.5	51.1	33.8	49.6	
February	36.1	32.0	43.9	16.8	26.1	34.7	39.7	38.1	26.0	37.2	
March	35.5	33.1	43.3	18.5	25.8	34.8	40.0	36.0	27.1	37.2	
March Quarter	40.2	34.3	50.0	19.5	28.1	38.3	44.5	41.8	29.0	41.4	

(a) Star grade classifications have been revised. See Explanatory Notes.

(b) Break in time series between the March and June quarters 2003. See Explanatory Notes.

HOTELS, MOTELS AND SERVICED APARTMENTS, Star grading(a)—Qld *continued*

Period	Licensed hotels with facilities	Motels and guest houses	Serviced apartments	STAR GRADING						Ungraded	Total
				1	2	3	4	5			
GUEST ARRIVALS (b) ('000)											
2003											
March Quarter	775.9	750.3	434.2	11.5	74.7	603.0	990.0	247.3	34.0	1 960.4	
2004											
January	305.5	290.8	208.6	1.6	31.1	245.3	425.8	87.2	13.8	804.8	
February	260.4	243.3	162.2	1.0	24.0	197.2	355.8	77.4	10.5	665.9	
March	267.7	264.5	167.8	1.3	26.1	209.1	374.0	78.7	10.8	699.9	
March Quarter	833.6	798.5	538.5	3.9	81.2	651.6	1 155.5	243.3	35.2	2 170.7	
AVERAGE LENGTH OF STAY (days)											
2003											
March Quarter	2.7	2.1	4.5	2.3	1.8	2.6	3.1	3.0	3.0	2.9	
2004											
January	3.1	2.1	4.9	2.1	1.9	2.8	3.5	3.4	2.7	3.2	
February	2.5	2.0	4.2	2.3	1.9	2.5	2.9	2.7	2.5	2.7	
March	2.5	2.1	4.3	2.2	1.8	2.6	3.0	2.6	2.7	2.8	
March Quarter	2.7	2.1	4.5	2.2	1.9	2.7	3.2	2.9	2.6	2.9	
TAKINGS FROM ACCOMMODATION (b) (\$'000)											
2003											
March Quarter	154 670	72 701	88 789	899	5 035	64 014	165 528	76 007	4 676	316 159	
2004											
January	66 434	27 971	48 161	128	2 177	30 246	78 169	29 963	1 883	142 566	
February	49 657	25 409	31 567	100	1 712	22 356	58 481	22 608	1 376	106 633	
March	53 288	28 262	31 812	121	1 825	24 125	62 165	23 566	1 560	113 362	
March Quarter	169 379	81 642	111 541	349	5 714	76 727	198 814	76 138	4 820	362 561	
AVERAGE TAKINGS PER ROOM NIGHT OCCUPIED (\$)											
2003											
March Quarter	138.0	83.3	112.4	58.6	64.8	82.9	113.6	188.2	82.7	113.6	
2004											
January	152.5	88.5	131.2	61.8	69.8	98.7	126.2	214.7	91.8	127.4	
February	136.5	85.4	108.4	56.6	64.8	86.4	111.0	186.1	81.0	112.0	
March	137.9	85.6	103.8	57.1	64.8	85.7	109.4	189.8	81.9	110.8	
March Quarter	142.8	86.5	115.6	58.6	66.6	90.6	116.0	197.7	85.3	117.2	
AVERAGE TAKINGS PER AVAILABLE ROOM NIGHT (\$)											
2003											
March Quarter	83.4	44.3	70.9	27.6	26.0	47.2	69.0	117.5	38.9	66.6	
2004											
January	104.6	49.1	96.5	21.6	34.8	61.3	86.7	149.3	47.0	83.7	
February	83.6	47.7	67.6	18.1	29.3	48.5	69.3	120.4	36.7	66.9	
March	83.8	49.6	63.7	20.4	29.2	48.8	68.9	117.4	38.9	66.5	
March Quarter	90.8	48.8	76.1	20.1	31.1	53.0	75.1	129.2	41.0	72.5	

(a) Star grade classifications have been revised. See Explanatory Notes.

(b) Break in time series between the March and June quarters 2003. See Explanatory Notes.

HOTELS, MOTELS AND SERVICED APARTMENTS, Star grading(a)—SA

Period	Licensed hotels with facilities	Motels and guest houses	Serviced apartments	STAR GRADING						Ungraded	Total
				1	2	3	4	5			
ESTABLISHMENTS, CAPACITY AND EMPLOYMENT (b) (no.)											
March Quarter 2003											
Establishments	64	147	32	7	45	115	62	7	7	243	
Guest rooms	4 653	5 316	1 604	162	1 685	3 691	4 027	1 686	322	11 573	
Bed spaces	11 305	15 708	5 460	452	4 444	11 046	11 893	3 511	1 127	32 473	
Persons employed	3 971	2 279	545	79	939	1 726	2 517	1 423	111	6 795	
March Quarter 2004											
Establishments	66	144	37	7	38	117	67	9	9	247	
Guest rooms	4 761	5 226	1 827	np	1 478	3 725	4 095	np	335	11 814	
Bed spaces	11 288	15 400	6 152	np	3 862	10 938	11 973	np	986	32 840	
Persons employed	4 252	2 295	627	np	790	1 818	2 685	np	98	7 174	
ROOM NIGHTS OCCUPIED (b) ('000)											
2003											
March Quarter	235.7	252.9	87.1	5.5	55.8	174.9	225.5	106.4	7.5	575.7	
2004											
January	78.6	83.0	39.8	np	13.6	61.0	76.2	np	7.0	201.5	
February	86.7	77.9	34.0	np	12.8	55.0	76.9	np	5.2	198.5	
March	98.0	97.0	38.1	np	16.3	67.7	90.1	np	7.1	233.1	
March Quarter	263.2	257.9	112.0	np	42.7	183.6	243.2	np	19.3	633.1	
ROOM OCCUPANCY RATE (%)											
2003											
March Quarter	56.4	52.9	60.3	40.9	36.8	52.7	62.2	70.1	25.9	55.3	
2004											
January	53.3	51.4	70.3	np	29.9	52.8	60.1	np	67.7	55.1	
February	62.8	51.4	64.2	np	29.9	50.9	64.8	np	53.2	57.9	
March	66.4	59.9	67.3	np	35.6	58.6	70.9	np	68.4	63.6	
March Quarter	60.8	54.3	67.3	np	31.9	54.2	65.3	np	63.3	58.9	
GUEST NIGHTS (b) ('000)											
2003											
March Quarter	353.3	438.2	176.7	7.6	91.1	317.3	393.9	144.9	13.4	968.2	
2004											
January	130.1	157.0	83.2	np	25.1	121.6	146.8	np	10.7	370.3	
February	124.4	125.5	61.6	np	20.1	92.4	125.8	np	8.5	311.5	
March	140.2	159.4	68.9	np	25.8	116.5	144.6	np	12.4	368.5	
March Quarter	394.7	441.9	213.8	np	71.0	330.5	417.2	np	31.6	1 050.4	
BED OCCUPANCY RATE (%)											
2003											
March Quarter	34.9	31.0	36.0	20.6	22.8	31.9	36.8	45.9	13.2	33.2	
2004											
January	37.2	33.0	43.6	np	21.2	35.9	39.6	np	35.1	36.4	
February	38.0	28.1	34.5	np	17.9	29.1	36.2	np	29.6	32.7	
March	40.1	33.4	36.1	np	21.6	34.4	39.0	np	40.6	36.2	
March Quarter	38.4	31.6	38.2	np	20.3	33.2	38.3	np	35.2	35.2	

np not available for publication but included in totals where applicable, unless otherwise indicated

(b) Break in time series between the March and June quarters 2003. See Explanatory Notes.

(a) Star grade classifications have been revised. See Explanatory Notes.

Period	Licensed hotels with facilities	Motels and guest houses	Serviced apartments	STAR GRADING						Ungraded	Total
				1	2	3	4	5			
GUEST ARRIVALS (b) ('000)											
2003											
March Quarter	177.7	250.4	49.5	4.7	49.7	172.3	169.9	75.5	5.5	477.6	
2004											
January	57.4	87.9	24.0	np	13.2	62.3	59.8	np	5.1	169.3	
February	58.2	73.4	21.1	np	11.1	49.8	57.2	np	4.2	152.7	
March	66.4	89.9	26.6	np	13.7	61.3	69.6	np	5.6	182.9	
March Quarter	182.0	251.2	71.7	np	38.0	173.3	186.6	np	14.9	504.9	
AVERAGE LENGTH OF STAY (days)											
2003											
March Quarter	2.0	1.8	3.6	1.6	1.8	1.8	2.3	1.9	2.4	2.0	
2004											
January	2.3	1.8	3.5	np	1.9	2.0	2.5	np	2.1	2.2	
February	2.1	1.7	2.9	np	1.8	1.9	2.2	np	2.0	2.0	
March	2.1	1.8	2.6	np	1.9	1.9	2.1	np	2.2	2.0	
March Quarter	2.2	1.8	3.0	np	1.9	1.9	2.2	np	2.1	2.1	
TAKINGS FROM ACCOMMODATION (b) (\$'000)											
2003											
March Quarter	26 778	22 478	9 879	278	3 209	14 212	25 690	15 013	733	59 135	
2004											
January	8 975	7 492	4 330	np	869	5 126	8 581	np	535	20 798	
February	10 658	7 095	3 839	np	814	4 445	8 739	np	576	21 592	
March	12 465	8 923	4 830	np	1 090	5 535	10 443	np	1 120	26 217	
March Quarter	32 098	23 510	12 998	np	2 773	15 106	27 764	np	2 232	68 606	
AVERAGE TAKINGS PER ROOM NIGHT OCCUPIED (\$)											
2003											
March Quarter	113.6	88.9	113.5	50.6	57.5	81.2	113.9	141.1	97.5	102.7	
2004											
January	114.2	90.3	108.7	np	64.1	84.1	112.5	np	76.2	103.2	
February	123.0	91.1	112.9	np	63.4	80.8	113.7	np	111.6	108.8	
March	127.3	92.0	126.6	np	66.9	81.8	116.0	np	157.6	112.5	
March Quarter	121.9	91.2	116.1	np	65.0	82.3	114.2	np	115.7	108.4	
AVERAGE TAKINGS PER AVAILABLE ROOM NIGHT (\$)											
2003											
March Quarter	64.1	47.0	68.4	20.7	21.2	42.8	70.9	98.9	25.3	56.8	
2004											
January	60.8	46.4	76.5	np	19.2	44.4	67.6	np	51.5	56.9	
February	77.2	46.8	72.4	np	19.0	41.1	73.6	np	59.3	63.0	
March	84.5	55.1	85.3	np	23.8	47.9	82.3	np	107.9	71.6	
March Quarter	74.1	49.5	78.2	np	20.7	44.6	74.5	np	73.2	63.8	

np not available for publication but included in totals where applicable, unless otherwise indicated

(b) Break in time series between the March and June quarters 2003. See Explanatory Notes.

(a) Star grade classifications have been revised. See Explanatory Notes.

Period	Licensed hotels with facilities	Motels and guest houses	Serviced apartments	STAR GRADING						Total
				1	2	3	4	5	Ungraded	
ESTABLISHMENTS, CAPACITY AND EMPLOYMENT (b) (no.)										
March Quarter 2003										
Establishments	129	126	78	1	21	132	102	16	61	333
Guest rooms	9 483	5 927	4 387	np	np	7 289	7 265	2 752	1 921	19 797
Bed spaces	24 028	15 648	14 791	np	np	19 698	21 572	7 309	4 520	54 467
Persons employed	6 037	1 635	1 524	np	np	2 525	3 384	2 208	840	9 196
March Quarter 2004										
Establishments	127	130	85	1	23	133	117	16	52	342
Guest rooms	9 557	6 104	4 870	np	np	7 078	8 050	3 035	1 653	20 531
Bed spaces	24 241	15 704	16 149	np	np	18 766	23 774	8 142	3 778	56 094
Persons employed	6 326	1 691	1 841	np	np	2 429	3 801	2 593	735	9 858
ROOM NIGHTS OCCUPIED (b) ('000)										
2003										
March Quarter	513.2	254.1	241.0	np	np	327.7	416.5	174.1	69.1	1 008.3
2004										
January	167.8	89.0	98.2	np	np	108.8	156.7	64.2	18.3	355.0
February	176.4	84.8	86.7	np	np	103.8	152.8	66.0	18.4	347.9
March	189.4	92.5	93.9	np	np	116.2	162.5	68.4	20.6	375.9
March Quarter	533.7	266.3	278.8	np	np	328.8	472.1	198.6	57.2	1 078.8
ROOM OCCUPANCY RATE (%)										
2003										
March Quarter	60.1	47.6	61.0	np	np	49.9	63.7	70.3	39.9	56.6
2004										
January	56.7	47.3	65.0	np	np	49.6	62.9	68.2	35.7	55.9
February	63.6	48.0	61.4	np	np	50.6	65.6	75.0	38.4	58.5
March	63.9	48.9	62.2	np	np	53.0	65.1	72.7	40.1	59.1
March Quarter	61.4	48.1	62.9	np	np	51.0	64.5	71.9	38.0	57.8
GUEST NIGHTS (b) ('000)										
2003										
March Quarter	791.2	428.9	541.2	np	np	545.8	770.3	318.0	98.0	1 761.3
2004										
January	291.0	169.3	248.2	np	np	202.6	341.0	126.1	28.2	708.5
February	264.2	140.3	183.2	np	np	166.3	276.3	109.6	26.1	587.8
March	279.5	149.6	197.4	np	np	183.0	289.9	114.0	28.3	626.5
March Quarter	834.7	459.2	628.8	np	np	551.9	907.2	349.7	82.6	1 922.8
BED OCCUPANCY RATE (%)										
2003										
March Quarter	36.6	30.5	40.7	np	np	30.8	39.7	48.3	24.1	35.9
2004										
January	38.7	34.9	49.6	np	np	34.8	46.3	49.9	24.1	40.8
February	37.6	30.9	39.1	np	np	30.6	40.1	46.4	23.8	36.2
March	37.2	30.7	39.4	np	np	31.5	39.3	45.2	24.2	36.0
March Quarter	37.8	32.2	42.8	np	np	32.3	42.0	47.2	24.0	37.7

np not available for publication but included in totals where applicable, unless otherwise indicated

(b) Break in time series between the March and June quarters 2003. See Explanatory Notes.

(a) Star grade classifications have been revised. See Explanatory Notes.

Period	Licensed hotels with facilities	Motels and guest houses	Serviced apartments	STAR GRADING						Total
				1	2	3	4	5	Ungraded	
GUEST ARRIVALS (b) ('000)										
2003										
March Quarter	342.7	203.3	162.3	np	np	232.6	304.4	114.0	42.8	708.4
2004										
January	131.6	76.0	65.2	np	np	86.0	120.8	48.2	12.7	272.8
February	127.8	62.6	55.1	np	np	73.4	107.0	48.7	12.1	245.5
March	136.3	72.8	58.5	np	np	79.8	119.7	50.1	12.7	267.7
March Quarter	395.8	211.4	178.8	np	np	239.2	347.6	147.1	37.5	785.9
AVERAGE LENGTH OF STAY (days)										
2003										
March Quarter	2.3	2.1	3.3	np	np	2.3	2.5	2.8	2.3	2.5
2004										
January	2.2	2.2	3.8	np	np	2.4	2.8	2.6	2.2	2.6
February	2.1	2.2	3.3	np	np	2.3	2.6	2.3	2.2	2.4
March	2.1	2.1	3.4	np	np	2.3	2.4	2.3	2.2	2.3
March Quarter	2.1	2.2	3.5	np	np	2.3	2.6	2.4	2.2	2.4
TAKINGS FROM ACCOMMODATION (b) (\$'000)										
2003										
March Quarter	57 395	21 009	28 015	np	np	26 360	47 867	25 810	5 069	106 419
2004										
January	19 692	7 898	12 716	np	np	9 349	18 792	10 464	1 260	40 307
February	20 755	7 137	10 064	np	np	8 573	17 566	10 163	1 242	37 956
March	21 335	7 431	10 584	np	np	9 128	18 189	10 216	1 337	39 350
March Quarter	61 782	22 466	33 365	np	np	27 050	54 548	30 844	3 840	117 613
AVERAGE TAKINGS PER ROOM NIGHT OCCUPIED (\$)										
2003										
March Quarter	111.8	82.7	116.2	np	np	80.4	114.9	148.2	73.4	105.5
2004										
January	117.3	88.8	129.5	np	np	85.9	119.9	163.0	68.9	113.5
February	117.7	84.2	116.0	np	np	82.6	115.0	154.1	67.6	109.1
March	112.6	80.3	112.7	np	np	78.5	111.9	149.3	65.0	104.7
March Quarter	115.8	84.4	119.7	np	np	82.3	115.6	155.3	67.1	109.0
AVERAGE TAKINGS PER AVAILABLE ROOM NIGHT (\$)										
2003										
March Quarter	67.2	39.4	71.0	np	np	40.2	73.2	104.2	29.3	59.7
2004										
January	66.5	41.9	84.2	np	np	42.6	75.5	111.2	24.6	63.4
February	74.9	40.4	71.3	np	np	41.8	75.4	115.5	25.9	63.8
March	72.0	39.3	70.1	np	np	41.6	72.9	108.6	26.1	61.8
March Quarter	71.0	40.5	75.3	np	np	42.0	74.6	111.7	25.5	63.0

np not available for publication but included in totals where applicable, unless otherwise indicated

(a) Star grade classifications have been revised. See Explanatory Notes.

(b) Break in time series between the March and June quarters 2003. See Explanatory Notes.

HOTELS, MOTELS AND SERVICED APARTMENTS, Star grading(a)—Tas.

Period	Licensed hotels with facilities	Motels and guest houses	Serviced apartments	STAR GRADING						Ungraded	Total
				1	2	3	4	5			
ESTABLISHMENTS, CAPACITY AND EMPLOYMENT (b) (no.)											
March Quarter 2003											
Establishments	52	55	31	1	13	69	46	—	9	138	
Guest rooms	2 840	1 795	1 128	np	436	2 476	2 593	—	np	5 763	
Bed spaces	7 898	5 394	3 958	np	1 298	7 581	7 554	—	np	17 250	
Persons employed	2 468	1 050	559	np	224	1 268	2 369	—	np	4 077	
March Quarter 2004											
Establishments	54	57	32	1	11	75	47	—	9	143	
Guest rooms	2 947	1 921	1 201	np	np	2 671	2 739	—	236	6 069	
Bed spaces	8 172	5 592	4 090	np	np	7 756	8 174	—	793	17 854	
Persons employed	2 669	1 061	633	np	np	1 592	2 349	—	180	4 363	
ROOM NIGHTS OCCUPIED (b) ('000)											
2003											
March Quarter	170.3	117.3	77.0	np	19.9	154.6	177.8	—	np	364.6	
2004											
January	61.5	41.1	28.8	np	np	58.2	64.2	—	3.9	131.4	
February	63.7	41.3	27.7	np	np	59.2	64.9	—	np	132.6	
March	71.0	46.6	30.1	np	6.1	66.4	70.9	—	np	147.7	
March Quarter	196.1	128.9	86.6	np	np	183.9	199.9	—	11.8	411.7	
ROOM OCCUPANCY RATE (%)											
2003											
March Quarter	66.6	72.6	75.9	np	50.6	69.4	76.2	—	np	70.3	
2004											
January	67.3	69.0	77.5	np	np	70.3	75.6	—	53.8	69.9	
February	74.5	74.1	79.4	np	np	76.4	81.7	—	np	75.3	
March	77.7	78.2	80.9	np	48.3	80.2	83.5	—	np	78.5	
March Quarter	73.1	73.8	79.2	np	np	75.6	80.2	—	55.0	74.5	
GUEST NIGHTS (b) ('000)											
2003											
March Quarter	291.9	235.2	179.3	np	37.1	321.4	320.7	—	np	706.4	
2004											
January	116.1	88.2	75.1	np	np	128.1	132.4	—	10.3	279.3	
February	105.2	79.3	59.6	np	np	113.8	114.3	—	np	244.1	
March	115.8	86.0	65.0	np	10.1	125.3	122.2	—	np	266.8	
March Quarter	337.1	253.4	199.7	np	np	367.1	368.9	—	27.7	790.2	
BED OCCUPANCY RATE (%)											
2003											
March Quarter	41.1	48.4	50.3	np	31.8	47.1	47.2	—	np	45.5	
2004											
January	45.8	50.9	59.2	np	np	53.3	52.3	—	42.1	50.5	
February	44.4	48.9	50.3	np	np	50.6	48.2	—	np	47.1	
March	45.7	49.6	51.3	np	29.8	52.1	48.2	—	np	48.2	
March Quarter	45.3	49.8	53.6	np	np	52.0	49.6	—	38.4	48.6	

— nil or rounded to zero (including null cells)

np not available for publication but included in totals where applicable, unless otherwise indicated

(a) Star grade classifications have been revised. See Explanatory Notes.

(b) Break in time series between the March and June quarters 2003. See Explanatory Notes.

Period	Licensed hotels with facilities	Motels and guest houses	Serviced apartments	STAR GRADING						Total
				1	2	3	4	5	Ungraded	
GUEST ARRIVALS (b) ('000)										
2003										
March Quarter	161.8	128.5	80.0	np	23.3	186.1	144.7	—	np	370.3
2004										
January	62.6	43.2	30.6	np	np	66.3	58.8	—	5.6	136.4
February	60.7	41.2	25.9	np	np	61.8	55.2	—	np	127.8
March	66.6	45.6	28.1	np	6.6	68.8	58.9	—	np	140.3
March Quarter	189.9	130.0	84.6	np	np	197.0	173.0	—	16.7	404.5
AVERAGE LENGTH OF STAY (days)										
2003										
March Quarter	1.8	1.8	2.2	np	1.6	1.7	2.2	—	np	1.9
2004										
January	1.9	2.0	2.5	np	np	1.9	2.3	—	1.9	2.0
February	1.7	1.9	2.3	np	np	1.8	2.1	—	np	1.9
March	1.7	1.9	2.3	np	1.5	1.8	2.1	—	np	1.9
March Quarter	1.8	1.9	2.4	np	np	1.9	2.1	—	1.7	2.0
TAKINGS FROM ACCOMMODATION (b) (\$'000)										
2003										
March Quarter	16 888	11 731	9 297	np	1 250	13 634	21 812	—	np	37 916
2004										
January	6 647	4 589	3 857	np	np	5 556	8 695	—	489	15 093
February	6 899	4 415	3 475	np	np	5 409	8 698	—	np	14 789
March	7 476	4 904	3 765	np	354	6 105	9 221	—	np	16 145
March Quarter	21 021	13 908	11 097	np	np	17 070	26 614	—	1 345	46 026
AVERAGE TAKINGS PER ROOM NIGHT OCCUPIED (\$)										
2003										
March Quarter	99.2	100.0	120.7	np	63.0	88.2	122.7	—	np	104.0
2004										
January	108.0	111.8	133.7	np	np	95.5	135.5	—	124.1	114.8
February	108.4	106.9	125.7	np	np	91.3	134.1	—	np	111.5
March	105.3	105.3	125.0	np	58.3	91.9	130.1	—	np	109.3
March Quarter	107.2	107.9	128.1	np	np	92.8	133.1	—	113.8	111.8
AVERAGE TAKINGS PER AVAILABLE ROOM NIGHT (\$)										
2003										
March Quarter	66.1	72.6	91.6	np	31.8	61.2	93.5	—	np	73.1
2004										
January	72.8	77.1	103.6	np	np	67.1	102.4	—	66.8	80.2
February	80.7	79.3	99.8	np	np	69.8	109.5	—	np	84.0
March	81.8	82.3	101.1	np	28.2	73.7	108.6	—	np	85.8
March Quarter	78.4	79.6	101.5	np	np	70.2	106.8	—	62.6	83.3

— nil or rounded to zero (including null cells)

np not available for publication but included in totals where applicable, unless otherwise indicated

(a) Star grade classifications have been revised. See Explanatory Notes.

(b) Break in time series between the March and June quarters 2003. See Explanatory Notes.

Period	Licensed hotels with facilities	Motels and guest houses	Serviced apartments	STAR GRADING						Ungraded	Total
				1	2	3	4	5			
ESTABLISHMENTS, CAPACITY AND EMPLOYMENT (b) (no.)											
March Quarter 2003											
Establishments	24	46	18	4	16	35	18	3	12	88	
Guest rooms	2 160	2 968	1 192	np	np	2 321	2 530	np	330	6 320	
Bed spaces	6 093	8 587	3 946	np	np	7 099	7 715	np	876	18 626	
Persons employed	1 747	846	344	np	np	781	1 179	np	135	2 937	
March Quarter 2004											
Establishments	23	46	20	2	17	36	20	1	13	89	
Guest rooms	2 162	2 926	1 318	np	np	2 285	2 752	np	np	6 406	
Bed spaces	5 717	8 678	4 073	np	np	6 861	8 012	np	np	18 468	
Persons employed	1 598	784	342	np	np	597	1 526	np	np	2 724	
ROOM NIGHTS OCCUPIED (b) ('000)											
2003											
March Quarter	86.9	107.6	44.8	np	np	83.2	109.8	np	8.0	239.2	
2004											
January	25.0	29.0	15.3	np	np	21.0	35.1	np	np	69.3	
February	32.6	32.4	16.0	np	np	20.9	46.2	np	np	81.0	
March	35.6	37.8	18.7	np	6.4	27.0	50.6	np	np	92.1	
March Quarter	93.2	99.2	49.9	np	np	69.0	131.9	np	np	242.3	
ROOM OCCUPANCY RATE (%)											
2003											
March Quarter	45.3	40.3	41.7	np	np	40.4	48.2	np	26.9	42.3	
2004											
January	37.3	32.2	37.4	np	np	29.7	41.1	np	np	35.0	
February	52.0	38.5	41.8	np	np	31.5	57.9	np	np	43.8	
March	53.2	42.7	45.7	np	29.2	39.1	59.3	np	np	46.9	
March Quarter	47.4	37.8	41.6	np	np	33.4	52.7	np	np	41.8	
GUEST NIGHTS (b) ('000)											
2003											
March Quarter	132.6	175.3	85.7	np	np	146.6	170.0	np	14.1	393.6	
2004											
January	41.8	53.3	32.6	np	np	43.3	61.9	np	np	127.7	
February	51.4	52.9	29.1	np	np	37.5	72.9	np	np	133.3	
March	56.8	64.0	34.3	np	10.3	50.4	80.1	np	np	155.1	
March Quarter	150.0	170.1	96.0	np	np	131.2	214.9	np	np	416.1	
BED OCCUPANCY RATE (%)											
2003											
March Quarter	24.6	22.7	24.1	np	np	23.3	24.5	np	17.8	23.6	
2004											
January	23.6	20.0	25.8	np	np	20.4	24.9	np	np	22.4	
February	31.0	21.2	24.6	np	np	18.8	31.4	np	np	25.0	
March	32.1	24.4	27.2	np	17.6	24.3	32.3	np	np	27.4	
March Quarter	28.8	21.9	25.9	np	np	21.2	29.5	np	np	24.9	

np not available for publication but included in totals where applicable, unless otherwise indicated

(b) Break in time series between the March and June quarters 2003. See Explanatory Notes.

(a) Star grade classifications have been revised. See Explanatory Notes.

Period	Licensed hotels with facilities	Motels and guest houses	Serviced apartments	STAR GRADING						Ungraded	Total
				1	2	3	4	5			
GUEST ARRIVALS (b) ('000)											
2003											
March Quarter	75.6	98.9	33.5	np	np	78.7	85.4	np	6.9	208.0	
2004											
January	24.5	34.0	10.7	np	np	25.1	32.3	np	np	69.3	
February	30.1	33.6	10.5	np	np	21.7	40.6	np	np	74.2	
March	32.5	40.3	12.6	np	4.9	29.3	43.2	np	np	85.5	
March Quarter	87.2	108.0	33.8	np	np	76.1	116.2	np	np	229.0	
AVERAGE LENGTH OF STAY (days)											
2003											
March Quarter	1.8	1.8	2.6	np	np	1.9	2.0	np	2.1	1.9	
2004											
January	1.7	1.6	3.0	np	np	1.7	1.9	np	np	1.8	
February	1.7	1.6	2.8	np	np	1.7	1.8	np	np	1.8	
March	1.7	1.6	2.7	np	2.1	1.7	1.9	np	np	1.8	
March Quarter	1.7	1.6	2.8	np	np	1.7	1.9	np	np	1.8	
TAKINGS FROM ACCOMMODATION (b) (\$'000)											
2003											
March Quarter	11 274	10 202	4 886	np	np	7 692	12 930	np	505	26 362	
2004											
January	2 802	2 948	1 838	np	np	2 101	3 989	np	np	7 589	
February	3 734	3 608	1 877	np	np	1 998	5 558	np	np	9 220	
March	4 060	3 951	2 233	np	396	2 636	5 928	np	np	10 245	
March Quarter	10 597	10 508	5 949	np	np	6 735	15 475	np	np	27 053	
AVERAGE TAKINGS PER ROOM NIGHT OCCUPIED (\$)											
2003											
March Quarter	129.8	94.9	109.2	np	np	92.5	117.8	np	63.2	110.2	
2004											
January	112.2	101.7	120.3	np	np	99.9	113.7	np	np	109.6	
February	114.6	111.4	117.4	np	np	95.7	120.2	np	np	113.9	
March	113.9	104.6	119.7	np	61.5	97.5	117.1	np	np	111.2	
March Quarter	113.7	105.9	119.1	np	np	97.7	117.3	np	np	111.6	
AVERAGE TAKINGS PER AVAILABLE ROOM NIGHT (\$)											
2003											
March Quarter	58.8	38.2	45.5	np	np	37.3	56.8	np	17.0	46.6	
2004											
January	41.8	32.8	45.0	np	np	29.7	46.8	np	np	38.4	
February	59.6	42.9	49.1	np	np	30.2	69.6	np	np	49.8	
March	60.6	44.6	54.7	np	18.0	38.1	69.5	np	np	52.1	
March Quarter	53.9	40.0	49.6	np	np	32.7	61.8	np	np	46.7	

np not available for publication but included in totals where applicable, unless otherwise indicated

(a) Star grade classifications have been revised. See Explanatory Notes.

(b) Break in time series between the March and June quarters 2003. See Explanatory Notes.

Period	Licensed hotels with facilities	Motels and guest houses	Serviced apartments	STAR GRADING						Ungraded	Total
				1	2	3	4	5			
ESTABLISHMENTS, CAPACITY AND EMPLOYMENT (b) (no.)											
March Quarter 2003											
Establishments	14	27	18	1	9	17	28	1	3	59	
Guest rooms	1 838	1 962	1 312	np	470	1 433	2 761	np	np	5 112	
Bed spaces	4 505	6 240	4 420	np	1 660	4 961	7 336	np	np	15 165	
Persons employed	1 207	668	424	np	106	545	1 294	np	np	2 299	
March Quarter 2004											
Establishments	15	25	17	—	6	18	30	1	2	57	
Guest rooms	1 902	1 785	1 254	—	np	1 493	2 829	np	np	4 941	
Bed spaces	4 737	4 985	3 766	—	np	4 462	7 356	np	np	13 488	
Persons employed	1 561	690	438	—	np	593	1 523	np	np	2 689	
ROOM NIGHTS OCCUPIED (b) ('000)											
2003											
March Quarter	105.0	90.8	89.0	np	18.7	66.4	172.4	np	np	284.8	
2004											
January	33.9	28.1	28.2	—	np	21.8	56.5	np	np	90.3	
February	38.7	29.4	27.4	—	np	21.7	61.8	np	np	95.5	
March	44.7	36.0	29.5	—	np	27.4	68.7	np	np	110.2	
March Quarter	117.4	93.5	85.1	—	np	70.8	187.0	np	np	296.0	
ROOM OCCUPANCY RATE (%)											
2003											
March Quarter	63.5	51.4	75.4	np	44.2	51.5	69.4	np	np	61.9	
2004											
January	57.6	50.8	70.9	—	np	47.0	63.8	np	np	58.6	
February	70.2	56.7	75.4	—	np	50.1	75.4	np	np	66.7	
March	75.8	65.0	75.9	—	np	59.2	78.3	np	np	71.9	
March Quarter	67.8	57.5	74.0	—	np	52.1	72.4	np	np	65.7	
GUEST NIGHTS (b) ('000)											
2003											
March Quarter	155.3	155.5	161.1	np	39.2	126.6	265.5	np	np	471.9	
2004											
January	53.4	55.5	57.4	—	np	46.3	98.8	np	np	166.4	
February	49.9	45.0	45.7	—	np	35.8	86.7	np	np	140.6	
March	58.3	59.5	46.5	—	np	49.9	94.2	np	np	164.3	
March Quarter	161.6	160.1	149.6	—	np	132.0	279.7	np	np	471.2	
BED OCCUPANCY RATE (%)											
2003											
March Quarter	38.3	27.7	40.5	np	26.2	28.4	40.2	np	np	34.6	
2004											
January	36.4	35.9	48.1	—	np	33.4	42.9	np	np	39.5	
February	36.3	31.1	41.8	—	np	27.7	40.6	np	np	35.9	
March	39.7	38.5	39.8	—	np	36.1	41.3	np	np	39.3	
March Quarter	37.5	35.3	43.3	—	np	32.5	41.6	np	np	38.3	

— nil or rounded to zero (including null cells)

np not available for publication but included in totals where applicable, unless otherwise indicated

(a) Star grade classifications have been revised. See Explanatory Notes.

(b) Break in time series between the March and June quarters 2003. See Explanatory Notes.

Period	Licensed hotels with facilities	Motels and guest houses	Serviced apartments	STAR GRADING						Total
				1	2	3	4	5	Ungraded	
GUEST ARRIVALS (b) ('000)										
2003										
March Quarter	63.5	73.0	34.2	np	17.6	47.1	92.3	np	np	170.7
2004										
January	31.1	26.3	13.6	—	np	16.6	45.1	np	np	71.0
February	29.9	23.4	12.4	—	np	14.9	42.5	np	np	65.7
March	35.0	29.9	13.6	—	np	19.1	49.8	np	np	78.5
March Quarter	95.9	79.6	39.7	—	np	50.7	137.4	np	np	215.2
AVERAGE LENGTH OF STAY (days)										
2003										
March Quarter	2.4	2.1	4.7	np	2.2	2.7	2.9	np	np	2.8
2004										
January	1.7	2.1	4.2	—	np	2.8	2.2	np	np	2.3
February	1.7	1.9	3.7	—	np	2.4	2.0	np	np	2.1
March	1.7	2.0	3.4	—	np	2.6	1.9	np	np	2.1
March Quarter	1.7	2.0	3.8	—	np	2.6	2.0	np	np	2.2
TAKINGS FROM ACCOMMODATION (b) (\$'000)										
2003										
March Quarter	14 182	7 833	10 778	np	1 467	5 445	22 015	np	np	32 794
2004										
January	4 076	2 558	3 614	—	np	1 992	6 885	np	np	10 249
February	4 946	2 508	3 586	—	np	1 784	7 662	np	np	11 040
March	5 945	3 141	3 893	—	np	2 295	8 748	np	np	12 979
March Quarter	14 967	8 208	11 093	—	np	6 071	23 295	np	np	34 268
AVERAGE TAKINGS PER ROOM NIGHT OCCUPIED (\$)										
2003										
March Quarter	135.1	86.3	121.1	np	78.5	82.1	127.7	np	np	115.2
2004										
January	120.1	91.0	128.1	—	np	91.6	121.8	np	np	113.6
February	127.7	85.4	130.7	—	np	82.3	123.9	np	np	115.6
March	133.1	87.3	132.0	—	np	83.8	127.4	np	np	117.8
March Quarter	127.5	87.8	130.3	—	np	85.7	124.6	np	np	115.8
AVERAGE TAKINGS PER AVAILABLE ROOM NIGHT (\$)										
2003										
March Quarter	85.7	44.4	91.3	np	34.7	42.2	88.6	np	np	71.3
2004										
January	69.1	46.2	90.8	—	np	43.0	77.7	np	np	66.5
February	89.7	48.5	98.6	—	np	41.2	93.4	np	np	77.0
March	100.8	56.8	100.1	—	np	49.6	99.7	np	np	84.7
March Quarter	86.5	50.5	96.4	—	np	44.7	90.2	np	np	76.1

— nil or rounded to zero (including null cells)

np not available for publication but included in totals where applicable, unless otherwise indicated

(a) Star grade classifications have been revised. See Explanatory Notes.

(b) Break in time series between the March and June quarters 2003. See Explanatory Notes.

Period	South Coast	Illawarra	Sydney	Snowy Mountains	Capital Country	The Murray	Riverina	Explorer Country
--------	-------------	-----------	--------	-----------------	-----------------	------------	----------	------------------

ESTABLISHMENTS, CAPACITY AND EMPLOYMENT (no.)

March Quarter 2004

Establishments	82	34	288	66	65	99	62	125
Guest rooms	2 016	1 236	30 338	2 576	2 107	2 879	1 816	3 608
Bed spaces	6 119	3 670	73 538	9 302	5 877	8 640	5 090	10 617
Persons employed	696	624	19 093	515	915	972	566	1 241

ROOM NIGHTS OCCUPIED ('000)

2004

January	39.6	21.9	668.2	14.3	29.5	47.7	25.0	51.5
February	31.6	21.4	714.4	11.2	29.5	38.6	26.8	46.5
March	36.2	21.8	742.8	13.8	34.8	54.1	32.4	59.3
March Quarter	107.4	65.1	2 125.4	39.4	93.8	140.4	84.2	157.3

ROOM OCCUPANCY RATE (%)

2004

January	63.3	57.1	71.1	18.9	46.0	53.5	44.5	46.0
February	54.0	59.7	81.2	16.2	48.2	46.1	50.8	44.4
March	58.0	56.8	79.0	18.7	53.2	60.6	57.5	53.0
March Quarter	58.5	57.8	77.0	18.0	49.2	53.6	51.0	47.9

GUEST NIGHTS ('000)

2004

January	87.4	46.6	1 191.8	39.7	58.4	104.7	43.6	102.4
February	58.9	37.4	1 134.2	21.1	48.7	69.7	40.9	74.2
March	66.8	37.4	1 176.9	26.6	58.9	98.7	49.8	98.1
March Quarter	213.1	121.3	3 502.9	87.4	166.0	273.0	134.3	274.7

GUEST ARRIVALS ('000)

2004

January	45.7	21.9	444.8	17.1	41.8	52.1	32.6	74.4
February	33.1	18.9	453.3	12.0	32.0	39.6	28.6	52.2
March	36.6	18.9	475.6	14.5	40.3	54.2	36.2	65.4
March Quarter	115.4	59.7	1 373.6	43.6	114.1	145.8	97.4	192.0

TAKINGS FROM ACCOMMODATION (\$'000)

2004

January	4 338	2 751	99 221	1 330	2 695	4 266	2 125	4 284
February	2 759	2 546	108 933	914	2 863	3 259	2 341	3 791
March	3 164	2 585	113 198	1 171	3 356	4 619	2 831	4 825
March Quarter	10 261	7 883	321 353	3 415	8 914	12 144	7 298	12 900

<i>Period</i>	<i>Hunter</i>	<i>North Coast NSW</i>	<i>Northern Rivers Tropical NSW</i>	<i>New England North West</i>	<i>Outback NSW</i>	<i>Central Coast</i>	<i>Blue Mountains</i>
---------------	---------------	--------------------------------	---	---	------------------------	--------------------------	---------------------------

ESTABLISHMENTS, CAPACITY AND EMPLOYMENT (no.)

March Quarter 2004

Establishments	81	155	81	89	45	41	32
Guest rooms	3 360	5 239	2 366	2 551	1 142	1 577	1 221
Bed spaces	10 348	17 353	7 255	7 604	3 210	4 858	3 239
Persons employed	1 902	2 460	762	780	347	828	755

ROOM NIGHTS OCCUPIED ('000)

2004

January	56.2	117.1	47.5	38.6	13.6	30.9	17.6
February	52.2	86.6	36.8	30.3	12.6	24.9	17.3
March	62.5	93.1	37.2	39.3	15.9	23.9	19.5
March Quarter	170.9	296.9	121.5	108.2	42.0	79.7	54.5

ROOM OCCUPANCY RATE (%)

2004

January	54.0	72.1	64.8	48.8	38.3	63.1	46.4
February	53.6	57.0	53.9	41.0	38.1	54.5	49.0
March	60.0	57.3	51.4	49.7	44.8	49.0	51.6
March Quarter	55.9	62.3	56.8	46.6	40.4	55.5	49.0

GUEST NIGHTS ('000)

2004

January	113.4	302.6	107.6	79.7	22.9	76.8	33.9
February	93.0	180.5	70.7	50.2	18.8	49.2	28.9
March	107.3	192.8	70.2	64.8	24.7	50.6	34.2
March Quarter	313.6	675.8	248.5	194.7	66.3	176.6	97.0

GUEST ARRIVALS ('000)

2004

January	58.6	148.5	51.6	52.3	14.3	32.6	20.4
February	49.6	95.5	37.3	35.0	10.9	25.5	17.6
March	58.9	101.5	37.5	43.9	14.5	27.5	19.9
March Quarter	167.0	345.5	126.5	131.1	39.7	85.6	57.9

TAKINGS FROM ACCOMMODATION (\$'000)

2004

January	7 104	16 159	5 602	3 635	897	4 700	2 162
February	6 384	8 983	3 594	2 335	796	3 298	2 108
March	7 628	9 597	3 531	3 083	1 095	2 906	2 369
March Quarter	21 115	34 738	12 727	9 053	2 788	10 903	6 639

Period	Melbourne	Wimmera	Mallee	Western Western Grampians	Bendigo Loddon	Peninsula	Central Murray	Goulburn	High Country	Lakes	
ESTABLISHMENTS, CAPACITY AND EMPLOYMENT (no.)											
March Quarter 2004											
Establishments	269	6	42	55	20	32	22	20	29	74	22
Guest rooms	21 708	117	1 275	1 441	491	780	734	548	798	2 013	598
Bed spaces	54 114	354	3 740	4 521	1 487	2 348	2 032	1 525	2 321	7 052	1 771
Persons employed	15 574	17	435	752	230	249	388	148	457	678	261
ROOM NIGHTS OCCUPIED ('000)											
2004											
January	429.7	0.9	18.3	30.7	6.3	12.2	11.8	9.0	10.9	16.0	11.1
February	445.9	1.3	16.7	25.5	6.8	12.1	10.8	7.5	12.0	11.2	9.1
March	500.0	1.4	21.6	28.8	8.7	15.5	11.6	9.4	14.6	17.7	10.8
March Quarter	1 375.6	3.6	56.6	84.9	21.8	39.9	34.2	25.9	37.5	44.9	31.1
ROOM OCCUPANCY RATE (%)											
2004											
January	63.8	25.3	46.3	68.8	41.4	50.4	51.9	52.9	44.6	26.8	60.0
February	70.8	37.9	45.1	61.0	47.8	53.7	50.9	47.3	51.7	20.1	52.6
March	74.3	39.0	54.7	64.4	57.1	65.5	50.9	55.3	59.2	29.7	58.4
March Quarter	69.6	34.0	48.8	64.8	48.8	56.5	51.3	52.0	51.9	25.6	57.1
GUEST NIGHTS ('000)											
2004											
January	780.9	1.8	35.2	71.3	11.4	25.0	24.1	17.4	19.4	36.3	25.9
February	707.5	1.8	26.0	48.7	10.1	19.8	19.5	12.3	18.1	21.0	16.8
March	794.6	2.2	34.1	54.7	13.6	27.2	20.7	16.0	23.1	35.0	20.5
March Quarter	2 283.0	5.9	95.3	174.7	35.1	72.0	64.3	45.8	60.6	92.3	63.2
GUEST ARRIVALS ('000)											
2004											
January	277.0	1.1	21.2	37.7	9.0	14.2	11.5	10.8	10.8	19.0	16.5
February	286.3	1.2	16.3	30.0	7.9	12.3	11.5	8.2	11.6	12.2	11.3
March	314.9	1.4	21.8	33.7	9.7	15.3	12.0	11.0	13.1	20.0	13.7
March Quarter	878.2	3.6	59.4	101.5	26.7	41.8	35.0	30.0	35.6	51.1	41.5
TAKINGS FROM ACCOMMODATION (\$'000)											
2004											
January	60 381	65	1 528	3 849	549	1 216	1 686	805	1 013	1 512	1 172
February	61 905	81	1 284	2 848	570	1 135	1 461	636	1 166	997	746
March	77 958	93	1 700	3 045	737	1 478	1 503	786	1 406	1 585	888
March Quarter	200 244	240	4 513	9 742	1 856	3 829	4 650	2 227	3 585	4 094	2 806

Period	Gippsland	Melbourne East	Geelong	Macedon	Spa Country	Ballarat	Central Highlands	Upper Yarra	Murray East	Phillip Island
--------	-----------	----------------	---------	---------	-------------	----------	-------------------	-------------	-------------	----------------

ESTABLISHMENTS, CAPACITY AND EMPLOYMENT (no.)

March Quarter 2004

Establishments	33	14	25	4	4	23	13	11	15	11
Guest rooms	999	502	842	95	97	771	300	386	447	375
Bed spaces	2 828	1 285	2 381	262	345	2 468	916	988	1 172	1 252
Persons employed	307	498	495	76	120	377	84	191	121	142

ROOM NIGHTS OCCUPIED ('000)

2004										
January	12.9	5.2	17.6	np	1.7	13.1	np	2.8	5.2	8.2
February	11.9	6.9	15.2	np	1.5	13.1	np	3.3	4.5	5.8
March	15.9	7.9	15.0	1.4	1.8	16.3	4.3	3.9	6.6	6.5
March Quarter	40.8	20.0	47.8	3.5	5.0	42.5	11.2	10.0	16.4	20.6

ROOM OCCUPANCY RATE (%)

2004										
January	41.8	33.5	67.4	np	55.7	54.9	np	23.0	37.6	70.9
February	41.1	47.6	62.2	np	51.8	58.5	np	29.6	35.0	53.7
March	51.4	50.4	57.6	49.2	60.5	68.0	45.9	32.8	47.8	56.3
March Quarter	44.8	43.8	62.4	43.3	56.1	60.5	40.9	28.4	40.3	60.4

GUEST NIGHTS ('000)

2004										
January	23.2	9.4	33.8	np	3.2	29.0	np	4.5	10.0	24.6
February	17.7	10.7	23.3	np	2.5	24.7	np	4.7	7.2	12.6
March	23.4	12.1	25.0	1.6	3.2	32.7	8.7	5.6	10.8	14.0
March Quarter	64.3	32.2	82.1	4.0	8.9	86.4	22.6	14.7	28.0	51.2

GUEST ARRIVALS ('000)

2004										
January	12.9	4.8	16.5	np	2.0	16.7	np	2.0	6.5	9.3
February	11.0	5.7	12.7	np	1.7	12.7	np	3.0	4.5	5.8
March	13.8	6.2	13.0	1.1	2.1	16.8	5.8	3.5	6.4	6.6
March Quarter	37.8	16.7	42.2	2.7	5.8	46.3	14.9	8.6	17.3	21.7

TAKINGS FROM ACCOMMODATION (\$'000)

2004										
January	1 006	660	1 973	np	340	1 272	np	303	410	1 196
February	922	987	1 696	np	339	1 244	np	324	333	674
March	1 215	1 064	1 655	201	374	1 430	323	487	504	717
March Quarter	3 143	2 711	5 324	466	1 054	3 946	936	1 114	1 247	2 588

np not available for publication but included in totals where applicable, unless otherwise indicated

<i>Period</i>	<i>Gold Coast</i>	<i>Brisbane</i>	<i>Sunshine Coast</i>	<i>Hervey Bay/Maryborough</i>	<i>Darling Downs</i>	<i>Bundaberg</i>	<i>Fitzroy</i>	<i>Mackay</i>
ESTABLISHMENTS, CAPACITY AND EMPLOYMENT (no.)								
March Quarter 2004								
Establishments	156	159	105	48	66	29	86	54
Guest rooms	13 395	9 675	4 948	1 810	1 675	739	3 240	1 749
Bed spaces	42 784	28 041	17 141	5 629	5 076	2 269	9 848	5 157
Persons employed	8 702	6 552	2 324	825	592	310	1 610	921
ROOM NIGHTS OCCUPIED ('000)								
2004								
January	347.3	193.8	123.8	30.9	22.9	12.6	55.6	27.2
February	267.0	202.8	86.2	23.7	25.5	11.1	50.6	27.7
March	268.3	215.5	90.0	26.2	29.0	13.1	56.9	29.8
<i>March Quarter</i>	882.5	612.2	300.1	80.8	77.3	36.7	163.0	84.7
ROOM OCCUPANCY RATE (%)								
2004								
January	83.6	64.6	80.7	56.1	44.1	54.9	55.3	50.1
February	68.7	72.3	60.1	45.2	52.4	51.7	53.8	54.7
March	64.6	71.9	58.7	46.3	55.8	57.0	56.6	55.0
<i>March Quarter</i>	72.4	69.5	66.6	49.2	50.7	54.6	55.3	53.2
GUEST NIGHTS ('000)								
2004								
January	896.8	367.2	363.7	65.8	44.2	25.9	109.7	59.0
February	588.4	319.1	210.4	42.6	41.0	19.0	78.4	46.6
March	599.7	330.3	220.3	47.7	46.1	21.6	85.2	48.2
<i>March Quarter</i>	2 084.8	1 016.6	794.4	156.0	131.3	66.5	273.4	153.8
GUEST ARRIVALS ('000)								
2004								
January	213.0	146.1	83.4	29.2	30.8	15.6	52.7	27.5
February	172.1	136.5	65.6	21.7	27.5	12.2	39.1	22.5
March	164.0	142.7	65.5	23.7	29.8	13.4	44.1	24.3
<i>March Quarter</i>	549.1	425.4	214.5	74.6	88.1	41.2	135.9	74.3
TAKINGS FROM ACCOMMODATION (\$'000)								
2004								
January	48 886	20 510	18 593	3 137	1 787	1 194	5 836	2 451
February	30 396	23 065	10 534	1 976	1 964	944	4 685	2 420
March	29 637	24 715	10 737	2 194	2 245	1 046	5 301	2 673
<i>March Quarter</i>	108 920	68 289	39 864	7 308	5 996	3 183	15 822	7 545

<i>Period</i>	<i>Whitsundays</i>	<i>Northern</i>	<i>Tropical North Queensland</i>	<i>Outback</i>	<i>Great Barrier Reef(a)</i>
ESTABLISHMENTS, CAPACITY AND EMPLOYMENT (no.)					
March Quarter 2004					
Establishments	30	51	175	55	18
Guest rooms	2 658	2 365	11 275	1 472	2 731
Bed spaces	9 393	6 547	32 162	4 186	9 339
Persons employed	2 297	1 219	5 532	527	2 717
ROOM NIGHTS OCCUPIED ('000)					
2004					
January	57.2	34.6	198.0	15.0	57.4
February	39.0	38.0	163.2	17.4	37.9
March	44.5	44.8	183.0	22.2	42.8
<i>March Quarter</i>	140.7	117.5	544.2	54.6	138.1
ROOM OCCUPANCY RATE (%)					
2004					
January	69.4	47.3	56.7	32.9	67.8
February	50.6	55.4	50.0	40.7	48.3
March	54.0	61.1	52.5	48.7	50.9
<i>March Quarter</i>	58.2	54.6	53.1	40.8	55.9
GUEST NIGHTS ('000)					
2004					
January	146.5	58.8	422.2	23.6	154.9
February	83.4	55.3	308.3	23.1	89.2
March	94.4	67.3	348.9	29.7	98.7
<i>March Quarter</i>	324.3	181.4	1 079.5	76.4	342.8
GUEST ARRIVALS ('000)					
2004					
January	39.4	27.4	124.6	15.2	33.6
February	26.3	27.4	101.3	13.7	23.9
March	29.5	31.7	112.6	18.5	26.3
<i>March Quarter</i>	95.2	86.5	338.5	47.4	83.9
TAKINGS FROM ACCOMMODATION (\$'000)					
2004					
January	11 159	3 155	24 722	1 135	14 028
February	6 529	3 449	19 359	1 311	8 388
March	7 583	4 154	21 396	1 680	9 711
<i>March Quarter</i>	25 272	10 758	65 477	4 127	32 128

(a) Includes those parts of other Tourism Regions which fall within the Great Barrier Reef geographic area. Data are not included in Queensland totals.

<i>Period</i>	<i>Limestone Coast</i>	<i>Murraylands</i>	<i>Fleurieu Peninsula</i>	<i>Adelaide</i>	<i>Adelaide Hills</i>	<i>Barossa</i>	<i>Riverland</i>
---------------	------------------------	--------------------	---------------------------	-----------------	-----------------------	----------------	------------------

ESTABLISHMENTS, CAPACITY AND EMPLOYMENT (no.)

March Quarter 2004

Establishments	34	4	14	96	4	9	14
Guest rooms	982	97	412	6 688	134	363	496
Bed spaces	2 905	305	1 210	18 068	444	1 004	1 507
Persons employed	466	43	299	4 004	131	322	550

ROOM NIGHTS OCCUPIED ('000)

2004

January	19.4	1.5	7.4	126.4	2.1	6.1	6.5
February	16.1	1.4	6.2	131.2	2.0	5.9	6.1
March	20.5	1.5	6.8	150.4	2.3	7.4	7.8
March Quarter	56.0	4.4	20.5	407.9	6.5	19.4	20.3

ROOM OCCUPANCY RATE (%)

2004

January	63.8	50.5	58.3	61.1	51.5	54.3	42.0
February	56.5	48.7	52.3	67.6	52.7	55.9	42.5
March	67.2	50.2	53.0	72.5	55.4	66.0	50.5
March Quarter	62.6	49.9	54.6	67.1	53.2	58.8	45.0

GUEST NIGHTS ('000)

2004

January	35.6	2.5	16.6	228.6	4.9	13.1	12.4
February	24.2	2.2	13.5	202.9	3.6	10.5	9.4
March	31.9	2.5	13.3	235.8	4.3	13.4	12.0
March Quarter	91.7	7.3	43.4	667.3	12.8	37.0	33.9

GUEST ARRIVALS ('000)

2004

January	21.0	1.5	8.7	87.7	1.7	6.8	7.7
February	15.1	1.2	6.9	87.8	1.7	6.1	6.3
March	19.4	1.5	7.4	102.2	2.1	7.8	8.2
March Quarter	55.5	4.2	23.0	277.8	5.6	20.7	22.2

TAKINGS FROM ACCOMMODATION (\$'000)

2004

January	1 626	115	755	14 323	206	668	496
February	1 276	98	568	16 041	213	630	451
March	1 568	108	612	19 313	243	797	572
March Quarter	4 470	321	1 935	49 677	663	2 095	1 519

<i>Period</i>	<i>Clare Valley</i>	<i>Flinders Ranges</i>	<i>Outback SA</i>	<i>Eyre Peninsula</i>	<i>Yorke Peninsula</i>	<i>Kangaroo Island</i>
---------------	---------------------	------------------------	-------------------	-----------------------	------------------------	------------------------

ESTABLISHMENTS, CAPACITY AND EMPLOYMENT (no.)

March Quarter 2004

Establishments	4	20	9	25	8	6
Guest rooms	128	727	655	792	149	191
Bed spaces	393	2 165	1 564	2 305	458	512
Persons employed	85	303	185	578	71	137

ROOM NIGHTS OCCUPIED ('000)

2004

January	2.1	8.9	3.6	10.8	2.2	4.5
February	2.2	7.4	3.7	10.9	1.6	3.8
March	2.7	9.2	5.3	13.1	1.8	4.3
<i>March Quarter</i>	7.0	25.5	12.6	34.8	5.6	12.6

ROOM OCCUPANCY RATE (%)

2004

January	52.7	39.5	17.5	43.8	47.3	76.8
February	58.1	34.9	19.7	47.5	38.0	68.0
March	68.8	40.9	26.1	53.5	38.2	73.1
<i>March Quarter</i>	59.9	38.5	21.1	48.3	41.2	72.7

GUEST NIGHTS ('000)

2004

January	4.4	14.8	5.7	17.6	4.3	9.7
February	3.7	11.4	4.9	16.0	2.4	6.8
March	4.7	13.6	6.9	19.4	2.7	8.0
<i>March Quarter</i>	12.9	39.8	17.5	53.0	9.3	24.5

GUEST ARRIVALS ('000)

2004

January	2.8	8.1	4.1	11.1	2.6	5.5
February	2.4	7.5	2.7	9.4	1.7	3.7
March	3.0	9.5	3.9	11.0	2.0	4.8
<i>March Quarter</i>	8.3	25.1	10.8	31.5	6.3	14.0

TAKINGS FROM ACCOMMODATION (\$'000)

2004

January	229	676	260	802	158	483
February	232	522	279	801	113	368
March	305	712	412	1 002	129	444
<i>March Quarter</i>	765	1 909	951	2 605	401	1 296

<i>Period</i>	<i>Australia's Coral Coast</i>	<i>Australia's North West</i>	<i>Australia's South West</i>	<i>Experience Perth</i>	<i>Australia's Golden Outback</i>
---------------	--	---------------------------------------	---------------------------------------	-----------------------------	---

ESTABLISHMENTS, CAPACITY AND EMPLOYMENT (no.)

March Quarter 2004

Establishments	34	49	85	119	55
Guest rooms	1 353	3 154	3 394	10 689	1 941
Bed spaces	3 864	7 527	10 542	29 093	5 068
Persons employed	556	1 193	1 549	5 820	740

ROOM NIGHTS OCCUPIED ('000)

2004

January	19.1	35.5	63.7	212.8	23.9
February	16.5	38.7	50.9	215.4	26.4
March	19.4	44.2	54.4	228.5	29.4
<i>March Quarter</i>	<i>55.0</i>	<i>118.5</i>	<i>168.9</i>	<i>656.7</i>	<i>79.7</i>

ROOM OCCUPANCY RATE (%)

2004

January	45.5	36.5	60.5	64.3	39.7
February	42.1	42.3	51.7	69.6	46.9
March	46.3	45.2	51.7	69.0	48.9
<i>March Quarter</i>	<i>44.7</i>	<i>41.3</i>	<i>54.7</i>	<i>67.6</i>	<i>45.1</i>

GUEST NIGHTS ('000)

2004

January	36.1	54.7	155.6	421.1	41.0
February	24.9	52.9	100.6	371.3	38.1
March	29.5	60.3	106.1	389.2	41.4
<i>March Quarter</i>	<i>90.5</i>	<i>167.8</i>	<i>362.3</i>	<i>1 181.6</i>	<i>120.6</i>

GUEST ARRIVALS ('000)

2004

January	18.0	15.4	65.3	154.2	19.9
February	13.4	17.0	47.4	150.2	17.5
March	14.8	18.5	51.7	162.2	20.4
<i>March Quarter</i>	<i>46.2</i>	<i>51.0</i>	<i>164.4</i>	<i>466.6</i>	<i>57.8</i>

TAKINGS FROM ACCOMMODATION (\$'000)

2004

January	1 584	3 646	8 648	24 401	2 027
February	1 331	3 845	5 650	24 870	2 261
March	1 502	4 107	5 764	25 602	2 374
<i>March Quarter</i>	<i>4 418</i>	<i>11 598</i>	<i>20 062</i>	<i>74 873</i>	<i>6 662</i>

<i>Period</i>	<i>Greater Hobart</i>	<i>Southern</i>	<i>East Coast</i>	<i>Northern</i>	<i>Greater Launceston</i>	<i>North West</i>	<i>West Coast</i>
---------------	-----------------------	-----------------	-------------------	-----------------	---------------------------	-------------------	-------------------

ESTABLISHMENTS, CAPACITY AND EMPLOYMENT (no.)

March Quarter 2004

Establishments	44	6	13	4	32	33	11
Guest rooms	2 336	155	510	119	1 414	1 074	461
Bed spaces	6 159	484	1 760	383	4 459	3 340	1 269
Persons employed	1 807	79	305	54	1 150	686	282

ROOM NIGHTS OCCUPIED ('000)

2004

January	57.1	3.6	11.2	2.9	28.6	19.7	8.4
February	58.5	3.5	9.5	1.9	30.3	19.3	9.7
March	62.7	3.9	11.0	1.9	34.7	22.4	11.1
March Quarter	178.3	10.9	31.7	6.7	93.6	61.4	29.2

ROOM OCCUPANCY RATE (%)

2004

January	78.8	74.1	70.7	78.2	65.3	59.2	58.9
February	86.4	77.3	64.4	54.0	73.9	61.9	72.2
March	86.6	80.6	69.5	52.1	79.1	67.2	77.7
March Quarter	83.9	77.3	68.3	61.6	72.7	62.8	69.6

GUEST NIGHTS ('000)

2004

January	118.2	8.0	26.7	6.4	62.0	38.6	19.5
February	104.5	7.3	20.7	4.5	55.0	32.8	19.3
March	110.9	8.0	22.5	4.2	63.2	36.2	21.9
March Quarter	333.5	23.3	69.9	15.1	180.2	107.6	60.7

GUEST ARRIVALS ('000)

2004

January	44.6	5.7	16.1	4.1	31.5	23.8	10.6
February	42.2	5.2	14.4	2.8	31.4	20.5	11.2
March	44.9	5.9	15.9	2.8	35.2	23.3	12.2
March Quarter	131.8	16.8	46.4	9.8	98.0	67.7	34.1

TAKINGS FROM ACCOMMODATION (\$'000)

2004

January	6 956	371	1 503	288	2 938	2 174	863
February	6 795	337	1 210	184	3 257	2 073	933
March	7 380	377	1 326	190	3 504	2 326	1 042
March Quarter	21 131	1 084	4 039	662	9 700	6 573	2 837

Period Darwin Kakadu Arnhem Katherine Tablelands Petermann Alice Springs Canberra

ESTABLISHMENTS, CAPACITY AND EMPLOYMENT (no.)

March Quarter 2004

Establishments	35	4	3	10	7	7	23	57
Guest rooms	2 660	311	np	602	np	np	1 696	4 941
Bed spaces	7 507	1 013	np	1 546	np	np	5 352	13 488
Persons employed	1 176	178	np	150	np	np	741	2 689

ROOM NIGHTS OCCUPIED ('000)

2004

January	30.0	np	np	4.4	np	np	19.2	90.3
February	39.6	np	np	4.6	np	np	20.6	95.5
March	42.8	4.1	0.6	5.1	np	np	25.4	110.2
March Quarter	112.4	10.5	np	14.1	np	np	65.2	296.0

ROOM OCCUPANCY RATE (%)

2004

January	36.3	np	np	23.6	np	np	36.5	58.6
February	51.4	np	np	26.2	np	np	41.8	66.7
March	51.9	43.0	29.5	30.0	np	np	48.3	71.9
March Quarter	46.4	37.2	np	26.5	np	np	42.2	65.7

GUEST NIGHTS ('000)

2004

January	51.6	np	np	8.3	np	np	36.8	166.4
February	60.2	np	np	8.0	np	np	34.7	140.6
March	65.8	9.0	1.2	9.6	np	np	43.8	164.3
March Quarter	177.6	23.5	np	25.9	np	np	115.3	471.2

GUEST ARRIVALS ('000)

2004

January	21.8	np	np	5.4	np	np	20.8	71.0
February	29.6	np	np	3.4	np	np	20.3	65.7
March	31.0	7.1	0.5	3.8	np	np	25.5	78.5
March Quarter	82.4	19.3	np	12.6	np	np	66.5	215.2

TAKINGS FROM ACCOMMODATION (\$'000)

2004

January	2 884	np	np	331	np	np	1 702	10 249
February	3 988	np	np	370	np	np	2 045	11 040
March	4 324	349	85	409	np	np	2 284	12 979
March Quarter	11 196	741	np	1 110	np	np	6 031	34 268

np not available for publication but included in totals where applicable, unless otherwise indicated

(a) The Tourism Regions of Daly and Macdonnell do not appear in this table as there are no establishments in-scope of the collection in these regions.

EXPLANATORY NOTES

INTRODUCTION

1 This publication presents data from the quarterly Survey of Tourist Accommodation (STA). The STA is a mailout collection that completely enumerates all in-scope accommodation establishments within Australia.

SCOPE

2 On a quarterly basis the STA includes hotels, motels, guest houses and serviced apartments with 15 or more rooms or units.

3 Short-term non-residential accommodation, which is in scope of the STA, is accommodation which is not leased, and which is provided to guests who would generally stay for periods of less than two months.

4 Some establishments also provide long-term residential accommodation. For hotels, motels, guest houses and serviced apartments, the amount of such activity is considered to be insignificant and is included in the data presented in this publication.

DEFINITIONS OF ACCOMMODATION ESTABLISHMENTS

5 For 2004 the STA includes the following categories of establishments which provide predominantly short-term non-residential accommodation to the general public:

- hotels and resorts with facilities - establishments with 15 or more rooms which are licensed to operate a public bar and which provide accommodation on a room/suite basis, with a bath/shower and toilet in most guest rooms, but which do not have full cooking facilities (i.e. hot plates and oven/microwave) in most guest rooms
- motels, private hotels and guest houses with facilities - establishments with 15 or more rooms which are not licensed to operate a public bar, and which provide accommodation on a room/suite basis, with a bath/shower and toilet in most guest rooms, but which do not have full cooking facilities (i.e. hot plates and oven/microwave) in most guest rooms
- serviced apartments - establishments with 15 or more units which mostly comprise self-contained units at the same location, and which are available on a unit/apartment basis to the general public for a minimum of one night. The units should have full cooking facilities (i.e. hot plates and oven/microwave), refrigerator and bath/shower and toilet facilities; all bed linen and towels should be provided, and daily servicing (i.e. cleaning and bed making) must be available through the on-site management, although this service may not necessarily be used.

COVERAGE

6 The main source of coverage is from the Australian Automobile Association through AAA Tourism Pty Ltd. This is supplemented by notification of new tourism developments and their likely opening dates in selected guides, major tourism journals and periodicals and newspapers. Periodic comparison with lists of accommodation establishments provided by the various tourism commissions and industry associations is also undertaken.

STAR GRADING

7 Star grade classifications of establishments have been revised by AAA Tourism Pty Ltd. These changes have affected star grade tables in this publication. Further changes are expected to impact June and September quarter 2004 data. These changes should be taken into account when making comparisons with previous quarters.

DATA QUALITY

8 The survey does not have a sample component and the data are not subject to sampling variability. However, other inaccuracies collectively referred to as non-sampling error may affect the data. These non-sampling errors may arise from a number of sources, including:

- errors in the reporting of data by providers
- errors in the process of capturing data
- estimation for missing data
- definition and classification errors
- incomplete coverage.

EXPLANATORY NOTES *continued*

DATA QUALITY *continued*

9 Every effort has been made to reduce non-sampling error to a minimum by careful design and testing of questionnaires, and efficient operating procedures and systems used to compile statistics.

10 The March quarter 2004 response rates were:

- 92% licensed hotels
- 93% motels and guest houses
- 92% serviced apartments.

BREAK IN TIME SERIES

11 In the June quarter 2003 the ABS identified 132 hotels, motels and guest houses and serviced apartments which had been operating for a number of quarters but were not on the STA frame. These additional establishments were included in the STA from the June quarter 2003.

12 The addition of the 132 tourism establishments resulted in a break in time series between the March and June quarters 2003. The impact of the break in time series is explained in Appendix 1, *Tourist Accommodation, Australia* (cat. no. 8635.0), December quarter 2003. Particular care needs to be taken for all calculations of percentage changes that cross the break in series.

TAKINGS FROM ACCOMMODATION

13 From 1 July 2000, takings from accommodation include gross revenue from the provision of accommodation, including GST. Takings from meals are excluded. Where businesses are unable to provide the data inclusive of GST, it is automatically adjusted by the ABS prior to aggregation and release in output.

STATISTICAL GEOGRAPHY

14 Small area statistics for 2004 are classified to the *Australia Standard Geographical Classification (ASGC), 2003 Edition* (cat. no. 1216.0). Data are coded to the statistical local area (SLA) level.

15 These SLA data are aggregated to tourism regions as defined by relevant state and territory tourist commissions. Tourism regions are reviewed annually and are subject to boundary and name changes. Where changes have occurred care should be taken when making comparisons with previously published data at this level.

16 Details of SLAs, the composition of tourism regions, major changes to tourism regions and outline maps of tourism regions are provided on the Tourism Theme Page of the ABS web site <www.abs.gov.au>.

SEASONAL ADJUSTMENT

17 Seasonal adjustment is a means of removing the estimated effects of normal seasonal variation from the original time series so that the effect of other influences on the series may be more clearly recognised. Seasonal adjustment procedures do not aim to remove the irregular or non-seasonal influences which may be present in any particular month. Irregular influences that are highly volatile can make it difficult to interpret the movement of the series even after adjustment for seasonal variation, and cannot be assumed to indicate changes in the trend.

18 The way in which seasonally adjusted and trend estimates were calculated changed from a Forward Factor methodology to a Concurrent methodology in March quarter 2003. The Forward Factor method relied on an annual analysis of the original time series to estimate seasonal factors that were to be applied in the forthcoming four quarters. Under this method the projected seasonal factors, or forward factors, were not updated until the next annual analysis. The Concurrent methodology uses the most up to date original time series available at each reference period to estimate seasonal factors thus eliminating the need to use projected seasonal factors.

EXPLANATORY NOTES *continued*

TREND ESTIMATES

19 Smoothing the seasonally adjusted series reduces the impact of the irregular component of the seasonally adjusted series and creates the trend estimates. The trend estimates are derived by applying a 7-term Henderson moving average to the quarterly seasonally adjusted series. The Henderson moving average used in the middle of the time series is symmetric but, as the end of a time series is approached, asymmetric forms of the symmetric moving average are applied. Unlike the weights of the standard 7-term Henderson moving average, the weights used with the quarterly data have been tailored to suit the particular characteristics of individual series.

20 While these techniques enable trend estimates for the latest period to be produced, the process does result in revisions to the trend estimates in recent months, particularly as additional original estimates become available. For further information refer to *Information Paper: A Guide to Interpreting Time Series - Monitoring Trends, 2003* (cat. no. 1349.0) available at the ABS web site <www.abs.gov.au> .

EFFECTS OF ROUNDING

21 Where figures have been rounded, discrepancies may occur between totals and the sum of the component items.

RELATED PUBLICATIONS

22 Other ABS publications and products which may be of interest are outlined below. Please note, older publications may no longer be available through ABS bookshops but are available through ABS libraries. All publications released from 1998 onwards are available on the ABS web site <www.abs.gov.au> (charges apply).

Tourist Accommodation, Australia, Expanded Scope Collection cat. no. 8635.0.55.001 (irregular)

Directory of Tourism Statistics, 2001 cat. no. 1130.0 (irregular)

Overseas Arrivals and Departures, Australia cat. no. 3401.0 (issued monthly)

Short-term Visitor Arrivals Estimates, Australia cat. no. 3401.0.55.001 (issued monthly)

Tourism Indicators, Australia cat. no. 8634.0 (discontinued from September quarter 2002 - previously issued quarterly)

Tourist Accommodation, Small Area Data cat. no. 8635.1.55.001–8635.8.55.001 (data cubes for each state/territory - issued quarterly).

Australian National Accounts, Tourism Satellite Account cat. no. 5249.0 (annual)

23 Current publications and other products released by the ABS are listed in the *Catalogue of Publications and Products* (cat. no. 1101.0). The catalogue is available from any ABS office or the ABS web site <www.abs.gov.au>. The ABS also issues a daily Release Advice on the web site which details products to be released in the week ahead.

ABS DATA AVAILABLE ON REQUEST

24 As well as the statistics included in this publication, the ABS has other relevant data available on request. Inquiries should be made to the National Information and Referral Service on 1300 135 070.

GLOSSARY

Average length of stay	Average length of stay is expressed in numbers of days and calculated by dividing guest nights by guest arrivals.
Average takings per available room night	The takings from accommodation divided by the total number of guest nights for the survey period, $Avg.TakingsPerAvailableRoomNight(\$) = \frac{TakingsFromAccommodation}{(GuestRooms) * (No.OfDaysInThePeriod)}$
Average takings per room night occupied	The takings from accommodation divided by the total number of room nights occupied for the survey period.
Bed occupancy rate	The bed occupancy rate represents bed occupancy expressed as a percentage of total capacity available during the survey period, $BedOccupancyRate (\%) = \frac{GuestNightsOccupied}{(BedSpaces) * (No.OfDaysInThePeriod)} * 100$
Bed spaces	Three-quarter beds are counted as one bed space; double beds as two bed spaces. Cots are excluded.
Capacity	Capacity in terms of guest rooms/units is the maximum number available to accommodate paying guests during the survey period. Capacity closed temporarily for seasonal reasons is included.
Establishments	The number of hotels, motels and guest houses and serviced apartments within the scope of the survey which operated for any part of the survey period, or which closed temporarily for the quarter for seasonal reasons.
Guest arrivals	The total number of paying guests counted only on the first night they stayed at the accommodation establishment during the survey period.
Guest nights	The total number of paying guests counted on each night they stayed at the accommodation establishment during the survey period.
Guest rooms	The maximum number of rooms available at each establishment during the survey period for accommodating short-term paying guests. Units and apartments within serviced apartments are treated as rooms in these survey results.
Occupancy	Occupancy in terms of room nights occupied refers to the total number of nights each guest room was occupied during the survey period. Occupancy in terms of guest nights refers to the total number of paying guests counted on each night they stayed at the accommodation establishment during the survey period.
Persons employed	The total number of persons working at each accommodation establishment at the end of the survey period (including working proprietors and those working on other than accommodation activities).
Room nights available	The number of guest rooms/units available multiplied by the number of days for which they were available during the survey period. For establishments closing (other than for seasonal reasons) or opening during this period, operating periods only are included.
Room nights occupied	The number of nights each guest room/unit was occupied by a paying guest during the survey period.
Room occupancy rate	The room occupancy rate represents room occupancy expressed as a percentage of total capacity available during the survey period, $RoomOccupancyRate (\%) = \frac{RoomNightsOccupied}{(GuestRooms) * (No.OfDaysInThePeriod)} * 100$ <p>providing that, for establishments closing (other than for seasonal reasons) or opening during the survey period, the denominator of the above expression includes only operating periods.</p>

GLOSSARY *continued*

Star grading The grading of hotels, motels and guest houses with facilities and serviced apartments is based on the classification system owned by AAA Tourism Pty Ltd. The gradings are allocated according to a points system based on the amenities and facilities available to guests. Details of the grading scheme are contained in the publication *Accommodation Guide* published by AAA Tourism Pty Ltd for each of the individual Australian Motoring Organisations. For the purpose of classifying establishments to a star grading in this publication, 'half' star gradings are ignored (e.g. a two and a half star grading has been shown as two star).

Takings from accommodation Since 1 July 2000, takings from accommodation include gross revenue from the provision of accommodation, including GST. Takings from meals are excluded. In cases where takings from accommodation data cannot be provided inclusive of GST the amount of GST payable is estimated and the data revised accordingly.

Takings from accommodation for each month generally represent the takings received during that month. Where payments are received in advance of, or after the provision of accommodation to guests, the monthly figure for takings from accommodation may not necessarily bear a direct relationship to the number of guests accommodated during the month.

FOR MORE INFORMATION . . .

- INTERNET* **www.abs.gov.au** the ABS web site is the best place to start for access to summary data from our latest publications, information about the ABS, advice about upcoming releases, our catalogue, and Australia Now—a statistical profile.
- LIBRARY* A range of ABS publications is available from public and tertiary libraries Australia-wide. Contact your nearest library to determine whether it has the ABS statistics you require, or visit our web site for a list of libraries.
- CPI INFOLINE* For current and historical Consumer Price Index data, call 1902 981 074 (call cost 77c per minute).
- DIAL-A-STATISTIC* For the latest figures for National Accounts, Balance of Payments, Labour Force, Average Weekly Earnings, Estimated Resident Population and the Consumer Price Index call 1900 986 400 (call cost 77c per minute).

INFORMATION SERVICE

Data already published that can be provided within five minutes will be free of charge. Our information consultants can also help you to access the full range of ABS information—ABS user pays services can be tailored to your needs, time frame and budget. Publications may be purchased. Specialists are on hand to help you with analytical or methodological advice.

- PHONE* 1300 135 070
- EMAIL* client.services@abs.gov.au
- FAX* 1300 135 211
- POST* Client Services, ABS, GPO Box 796, Sydney NSW 2001

WHY NOT SUBSCRIBE?

ABS subscription services provide regular, convenient and prompt deliveries of selected ABS publications and products as they are released. Email delivery of monthly and quarterly publications is available.

- PHONE* 1300 366 323
- EMAIL* subscriptions@abs.gov.au
- FAX* (03) 9615 7848
- POST* Subscription Services, ABS, GPO Box 2796Y, Melbourne Vic 3001



2863500003043

ISSN 1031 0770

RRP \$23.00